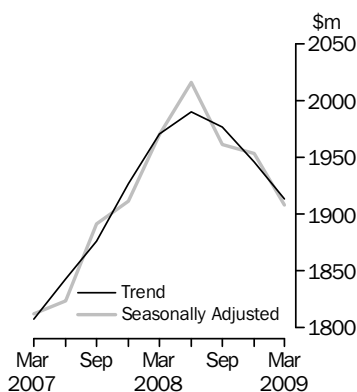


TOURIST ACCOMMODATION, AUSTRALIA

EMBARGO: 11.30AM (CANBERRA TIME) FRI 3 JUL 2009

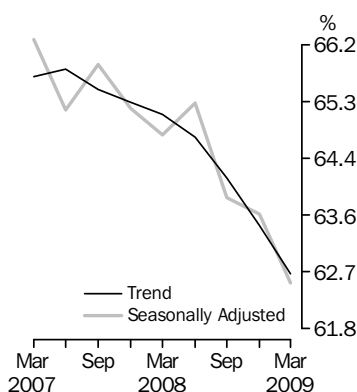
ACCOMMODATION TAKINGS

Australia



ROOM OCCUPANCY RATE

Australia



INQUIRIES

For further information about these and related statistics, contact the National Information and Referral Service on 1300 135 070.

KEY FIGURES

ACCOMMODATION WITH 15 ROOMS OR MORE

	Dec Qtr 08	Mar Qtr 09	Dec Qtr 08 to Mar Qtr 09	Mar Qtr 08 to Mar Qtr 09
Trend				
Takings from accommodation (\$m)	1 946.2	1 913.2	-1.7 %	-2.9 %
Room occupancy rate (%)	63.4	62.7	-0.7 pts	-2.4 pts
Seasonally Adjusted				
Takings from accommodation (\$m)	1 953.4	1 908.1	-2.3 %	-3.1 %
Room occupancy rate (%)	63.6	62.5	-1.1 pts	-2.3 pts

KEY POINTS

ACCOMMODATION TAKINGS

- In the March 2009 quarter, the trend estimate of total accommodation takings for hotels, motels and serviced apartments with 15 or more rooms decreased by 1.7% to \$1,913.2 million compared with the December quarter 2008.
- Over the same period, the seasonally adjusted estimate dropped by 2.3% to \$1908.1 million.

ROOM OCCUPANCY RATE

- The March quarter 2009 trend estimate room occupancy rate of 62.7% for hotels, motels and serviced apartments with 15 or more rooms was 0.7 percentage points lower than the trend estimate of 63.4% for the previous quarter.
- This is the seventh consecutive quarterly decline in the trend estimate of room occupancy rates for hotels, motels and serviced apartments with 15 or more rooms.
- At 62.5%, the seasonally adjusted room occupancy rate was 1.1 percentage points below the December quarter 2008 level.

NOTES

FORTHCOMING ISSUES

<i>ISSUE (Quarter)</i>	<i>RELEASE DATE</i>
June 2009	30 September 2009
September 2009	8 January 2010

.....

ABOUT THIS ISSUE

This issue presents results from the March quarter 2009 Survey of Tourist Accommodation (STA) for the following categories of establishments:

- licensed hotels and resorts with facilities and 5 or more rooms
- motels, private hotels and guest houses with facilities and 5 or more rooms
- serviced apartments with 5 or more units
- caravan parks with 40 or more powered sites
- holiday flats, units and houses of letting entities with 15 or more rooms or units
- visitor hostels with 25 or more bed spaces.

DATA NOTES

■ *ASGC 2008*

Small area statistics were updated from the Australian Standard Geographical Classification (ASGC) 2007 to ASGC 2008 in the March quarter 2009. Due to significant boundary changes at the Statistical Local Area level in Queensland and the Northern Territory, the composition of establishments may have changed significantly for small area statistics. The impact on State and Tourism Regions data is negligible. For more information please see 9503.0.55.001 - Tourism Region Maps and Concordance Files, Australia, 2008.

■ *Victorian bush fires*

The tragic Black Saturday bush fires in Victoria have resulted in a greater level of non-response and consequently a greater level of imputation. At the state level and based on March quarter 2008 estimates, the units imputed contributed around 0.7% to takings for Victoria.

Brian Pink
Australian Statistician

CONTENTS

	<i>page</i>
Abbreviations	4
Summary of Findings	5

TABLES

ORIGINAL, SEASONALLY ADJUSTED AND TREND

1 Hotels, motels and serviced apartments with 15 or more rooms	10
---	----

SUMMARY

2 Hotels, motels and serviced apartments	12
3 Licensed hotels and resorts	14
4 Motels, private hotels and guest houses	16
5 Serviced apartments	18
6 Caravan parks	20
7 Holiday flats, units and houses	22
8 Visitor hostels	24

STAR GRADING

9 Hotels, motels and serviced apartments with 5-14 rooms	25
10 Hotels, motels and serviced apartments with 15 or more rooms	27
11 Hotels, motels and serviced apartments with 5 or more rooms	29

STATES AND TERRITORIES

12 Hotels, motels and serviced apartments with 5-14 rooms	31
13 Hotels, motels and serviced apartments with 15 or more rooms	34
14 Hotels, motels and serviced apartments with 5 or more rooms	37
15 Caravan parks, short-term	40
16 Caravan parks, long-term	43
17 Caravan parks, total	46
18 Holiday flats, units and houses, real estate agents	49
19 Holiday flats, units and houses, other letting entities	51
20 Holiday flats, units and houses, total	53
21 Visitor hostels	55

OTHER INFORMATION

Explanatory Notes	57
Glossary	64

ABBREVIATIONS

'000	thousand
\$'000	thousand dollars
\$m	million dollars
AAA	Australian Automobile Association
ABS	Australian Bureau of Statistics
ACT	Australian Capital Territory
ASGC	Australian Standard Geographical Classification
cat. no.	Catalogue number
GST	goods and services tax
no.	number
NSW	New South Wales
NT	Northern Territory
pts	percentage points
qtr	quarter
Qld	Queensland
SA	South Australia
SLA	statistical local area
STA	Survey of Tourist Accommodation
Tas.	Tasmania
Vic.	Victoria
WA	Western Australia

SUMMARY OF FINDINGS

ORIGINAL

Hotels, motels and serviced apartments

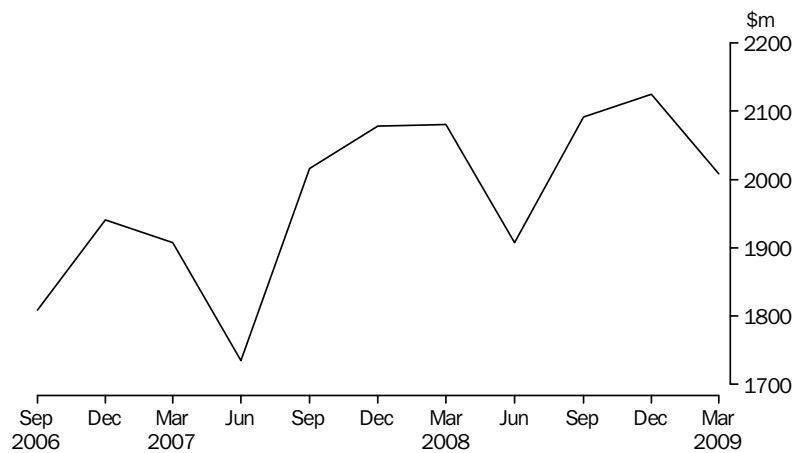
This summary contains key findings for original estimates. While trend and seasonally adjusted data are only available for hotels, motels and serviced apartments with 15 or more rooms, original estimates have two additional data series comprising hotels, motels and serviced apartments with 5 to 14 rooms and 5 or more rooms.

Original series are impacted by seasonal variations and irregular or non-seasonal influences. Comparison between quarters should be made with caution.

ACCOMMODATION TAKINGS

In the March quarter 2009, accommodation takings were \$2,008.4 million for hotels, motels and serviced apartments with 5 or more rooms, comprising \$1928.8 million for those establishments with 15 or more rooms and \$79.6 million for those with 5 to 14 rooms.

TAKINGS FROM ACCOMMODATION, Hotels, motels and serviced apartments with 5 or more rooms—Australia



Accommodation takings in March quarter 2009 for hotels, motels and serviced apartments with 15 or more rooms were highest in New South Wales (\$623.7 million) and Queensland (\$474.2 million).

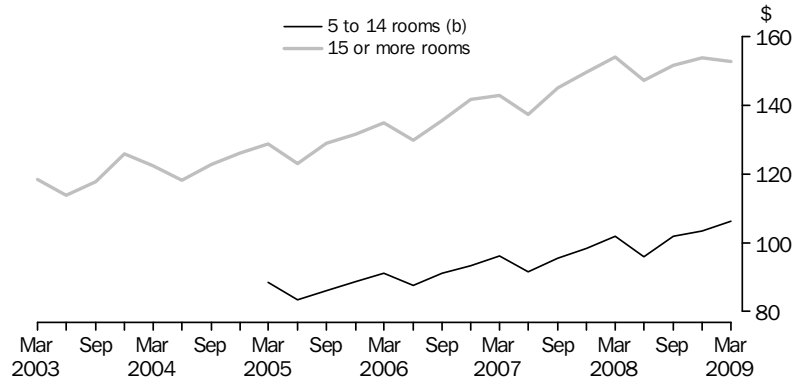
For Australia, the March quarter 2009 average takings per room night occupied were \$150.19 for establishments with 5 or more rooms. This was heavily influenced by hotels, motels and serviced apartments with 15 or more rooms which contributed 96.0% of total takings, and had an average takings per room night occupied of \$152.79. The average for 5 to 14 room establishments was \$106.36.

SUMMARY OF FINDINGS *continued*

Hotels, motels and serviced apartments *continued*

ACCOMMODATION TAKINGS *continued*

AVERAGE TAKINGS (a), Australia



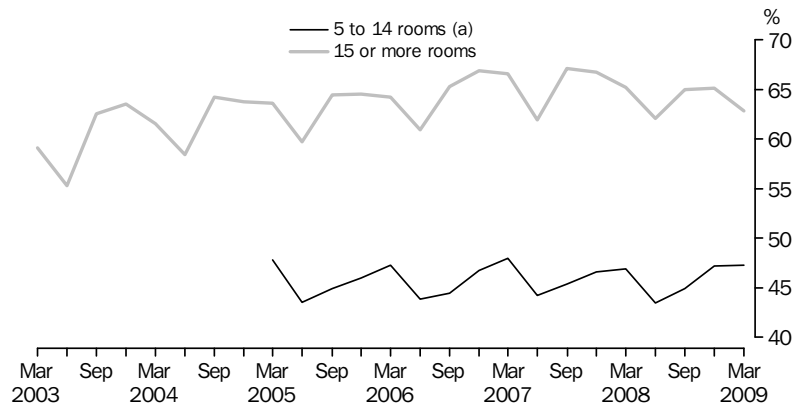
(a) Per room night occupied.

(b) These establishments were included in the survey from March 2005 onwards.

ROOM OCCUPANCY RATE

The room occupancy rate for hotels, motels and serviced apartments with 5 or more rooms was 61.7% in the March quarter 2009. For hotels, motels and serviced apartments with 15 or more rooms, the room occupancy rate was 62.9%, while demand for 5 to 14 room hotels, motels and serviced apartments was lower, as reflected by a room occupancy rate of 47.2%.

ROOM OCCUPANCY RATE, Australia



(a) These establishments were included in the survey from March 2005 onwards.

ROOM NIGHTS OCCUPIED

Room nights occupied were 13.4 million in the March quarter 2009 for hotels, motels and serviced apartments with 5 or more rooms. For hotels, motels and serviced apartments with 15 or more rooms, room nights occupied were 12.6 million in March quarter 2009, while for establishments with 5 to 14 rooms, room nights occupied were 0.7 million.

SUMMARY OF FINDINGS *continued*

Hotels, motels and serviced apartments continued

ROOM NIGHTS OCCUPIED *continued*

New South Wales contributed the highest proportion (31.8%) of room nights occupied for hotels, motels and serviced apartments with 15 or more rooms, followed by Queensland at 25.7%.

AVERAGE LENGTH OF STAY

The average length of stay in March quarter 2009 for hotels, motels and serviced apartments with 5 or more rooms was 2.3 days. In establishments with 15 or more rooms, the average length of stay was 2.3 days. For establishments with 5 to 14 rooms, the average length of stay was 1.9 days.

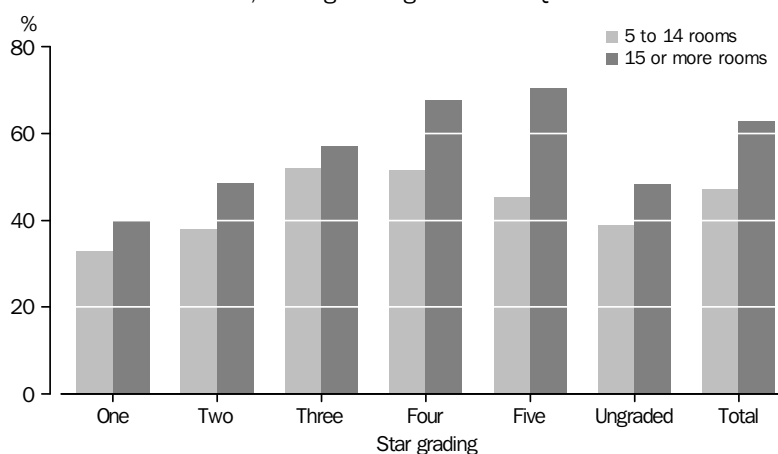
Queensland (2.7 days) reported the longest average length of stay for hotels, motels and serviced apartments with 15 or more rooms, followed by Western Australia (2.6 days). The shortest average length of stay was in Tasmania (1.9 days).

STAR GRADING

In the March quarter 2009, the room occupancy rate for five-star hotels, motels and serviced apartments with 5 or more rooms was 70.2% compared with 37.2% for one-star establishments. For hotels, motels and serviced apartments with 15 or more rooms, the room occupancy rate was 70.4% for five-star establishments compared with 45.4% for five-star establishments with 5 to 14 rooms.

In the 5-14 rooms category, room occupancy rates in the March quarter 2009, three-star establishments had the highest rate with 52.1% and one-star establishments had the lowest at 32.8%.

OCCUPANCY RATES, Stargrating—March Qtr 2009



In the March quarter 2009, the average takings per room night occupied for five-star hotels, motels and serviced apartments with 5 or more rooms were \$244.88 compared with \$69.91 for establishments with one star. The corresponding March quarter 2009 average takings for establishments with 15 or more rooms were \$244.69 for five-star establishments and \$71.59 for one-star establishments.

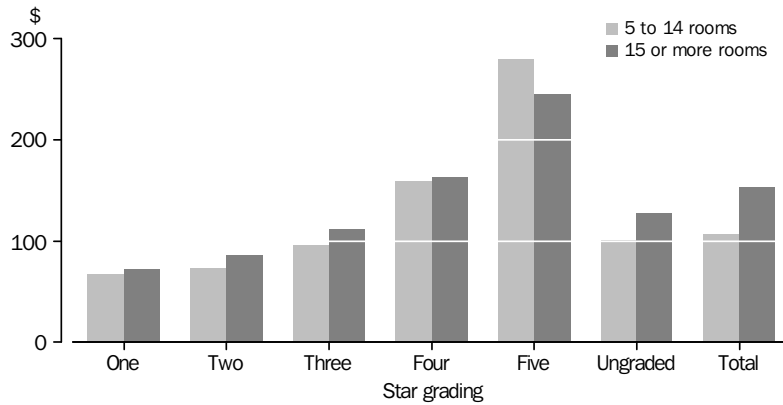
In comparison, establishments with 5 to 14 rooms had the highest average takings per room night occupied for five-star establishments (\$279.66), but lowest average takings per room night occupied for one-star establishments (\$66.47).

SUMMARY OF FINDINGS *continued*

Hotels, motels and serviced apartments continued

STAR GRADING *continued*

AVERAGE TAKINGS (a), Star grading—March Qtr 2009



(a) Per room night occupied

Caravan parks, holiday flats, units and houses, and visitor hostels

ACCOMMODATION TAKINGS

In the March quarter 2009, accommodation takings for caravan parks were \$284.8 million. Of this, New South Wales contributed the highest amount with \$106.5 million (37.4%) of the Australian total for the quarter.

Short-term caravan park takings were \$240.3 million in the March quarter 2009, 84.4% of total caravan park takings.

Accommodation takings for holiday flats, units and houses were \$174.9 million in the March quarter 2009. Real estate takings accounted for 31.5% of total holiday flats, units and houses takings, the rest being for other letting entities.

For visitor hostels, accommodation takings were \$66.5 million in the March quarter 2009.

OCCUPANCY RATE

The site occupancy rate for all caravan parks in the March quarter 2009 was 54.7%. Short-term caravan park occupancy was 51.6% and long-term caravan park occupancy was 76.5%.

For holiday flats, units and houses, the unit occupancy rate was 49.6% in the March quarter 2009.

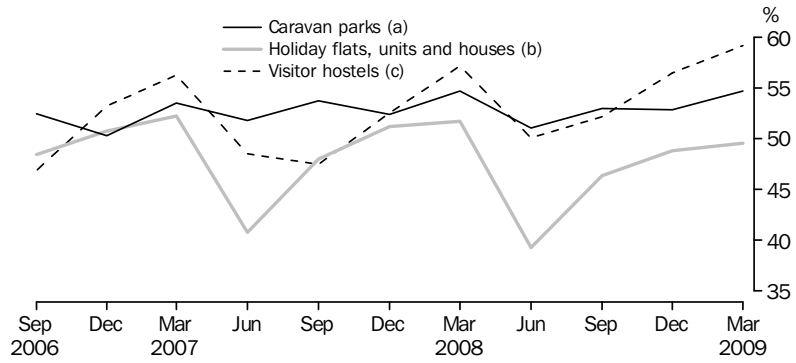
The bed occupancy rate for visitor hostels in the March quarter 2009 was 59.2%. New South Wales and Western Australia had the highest bed occupancy rates for visitor hostels in the March quarter 2009 with 68.0% and 66.6% respectively.

SUMMARY OF FINDINGS *continued*

Caravan parks, holiday flats, units and houses, and visitor hostels continued

OCCUPANCY RATE *continued*

OCCUPANCY RATES, Australia



(a) Site occupancy rate.
 (b) Unit occupancy rate.
 (c) Bed occupancy rate.

Period	ORIGINAL		SEASONALLY ADJUSTED		TREND	
	Takings from accommodation	Room occupancy rate	Takings from accommodation	Room occupancy rate	Takings from accommodation	Room occupancy rate
	\$m	%	\$m	%	\$m	%
2005						
September Quarter	1 618.2	64.4	1 570.8	63.0	1 563.7	63.1
December Quarter	1 650.9	64.5	1 575.9	63.0	1 591.4	63.3
2006						
March Quarter	1 649.2	64.2	1 629.0	63.8	1 623.2	63.6
June Quarter	1 526.5	60.9	1 675.1	64.3	1 664.4	64.0
September Quarter	1 740.5	65.3	1 689.2	63.9	1 715.7	64.6
December Quarter	1 866.6	66.9	1 785.2	65.4	1 763.7	65.2
2007						
March Quarter	1 832.3	66.6	1 812.5	66.3	1 807.4	65.7
June Quarter	1 667.1	61.9	1 823.6	65.2	1 842.5	65.8
September Quarter	1 942.6	67.1	1 891.5	65.9	1 876.3	65.5
December Quarter	2 000.6	66.8	1 911.5	65.2	1 926.6	65.3
2008						
March Quarter	1 999.8	65.2	1 969.7	64.8	1 970.8	65.1
June Quarter	1 838.3	62.1	2 016.2	65.3	1 990.3	64.8
September Quarter	2 014.8	65.0	1 961.3	63.8	1 976.6	64.1
December Quarter	2 044.1	65.1	1 953.4	63.6	1 946.2	63.4
2009						
March Quarter	1 928.8	62.9	1 908.1	62.5	1 913.2	62.7

continued

Period	ORIGINAL		SEASONALLY ADJUSTED		TREND	
	Takings change from prev. qtr	Room occupancy change from prev. qtr	Takings change from prev. qtr	Room occupancy change from prev. qtr	Takings change from prev. qtr	Room occupancy change from prev. qtr
	%	pts	%	pts	%	pts
2005						
September Quarter	16.0	4.7	2.1	-0.2	1.9	0.1
December Quarter	2.0	0.1	0.3	—	1.8	0.2
2006						
March Quarter	-0.1	-0.3	3.4	0.9	2.0	0.3
June Quarter	-7.4	-3.3	2.8	0.4	2.5	0.3
September Quarter	14.0	4.4	0.8	-0.3	3.1	0.6
December Quarter	7.2	1.6	5.7	1.4	2.8	0.6
2007						
March Quarter	-1.8	-0.3	1.5	0.9	2.5	0.5
June Quarter	-9.0	-4.7	0.6	-1.1	1.9	0.1
September Quarter	16.5	5.2	3.7	0.7	1.8	-0.3
December Quarter	3.0	-0.4	1.1	-0.7	2.7	-0.2
2008						
March Quarter	—	-1.6	3.0	-0.4	2.3	-0.2
June Quarter	-8.1	-3.1	2.4	0.5	1.0	-0.4
September Quarter	9.6	2.9	-2.7	-1.5	-0.7	-0.6
December Quarter	1.5	0.1	-0.4	-0.3	-1.5	-0.7
2009						
March Quarter	-5.6	-2.3	-2.3	-1.1	-1.7	-0.7

— nil or rounded to zero (including null cells)

SUMMARY OF HOTELS, MOTELS AND SERVICED APARTMENTS, Australia

	<i>Establishments</i>	<i>Rooms</i>	<i>Bed spaces</i>	<i>Persons employed</i>	<i>Room nights occupied</i>	<i>Room occupancy rate</i>
	no.	no.	no.	no.	'000	%
.....						
HOTELS MOTELS AND SERVICED APARTMENTS WITH 5 TO 14 ROOMS						
2008						
March Quarter	1 931	18 570	54 506	11 750	788.3	46.9
June Quarter	1 925	18 563	54 337	11 590	728.7	43.5
September Quarter	1 904	18 347	53 870	11 330	754.3	44.9
December Quarter	1 886	18 167	53 408	11 193	779.7	47.2
2009						
March Quarter	1 866	17 956	52 896	10 588	748.7	47.2
Year ended March 2008	3 083.2	45.8
Year ended March 2009	3 011.4	45.7
.....						
HOTELS MOTELS AND SERVICED APARTMENTS WITH 15 OR MORE ROOMS						
2008						
March Quarter	4 250	220 303	627 952	116 165	12 981.2	65.2
June Quarter	4 266	221 567	632 202	116 629	12 474.1	62.1
September Quarter	4 267	222 266	634 395	116 999	13 273.6	65.0
December Quarter	4 277	223 319	637 147	113 936	13 276.8	65.1
2009						
March Quarter	4 301	225 733	642 391	112 139	12 623.6	62.9
Year ended March 2008	51 849.5	65.3
Year ended March 2009	51 648.0	63.8
.....						
HOTELS MOTELS AND SERVICED APARTMENTS WITH 5 OR MORE ROOMS						
2008						
March Quarter	6 181	238 873	682 458	127 915	13 769.5	63.8
June Quarter	6 191	240 130	686 539	128 219	13 202.8	60.7
September Quarter	6 171	240 613	688 265	128 329	14 027.8	63.4
December Quarter	6 163	241 486	690 555	125 129	14 056.5	63.8
2009						
March Quarter	6 167	243 689	695 287	122 727	13 372.3	61.7
Year ended March 2008	54 932.8	63.7
Year ended March 2009	54 659.4	62.4
.....						
..	not applicable					

	<i>Guest nights occupied</i>	<i>Bed occupancy rate</i>	<i>Guest arrivals</i>	<i>Average length of stay</i>	<i>Takings from accommodation</i>
	'000	%	'000	days	\$'000
.....					
HOTELS MOTELS AND SERVICED APARTMENTS WITH 5 TO 14 ROOMS					
2008					
March Quarter	1 502.0	30.4	819.2	1.8	80 407
June Quarter	1 301.1	26.5	718.9	1.8	69 914
September Quarter	1 379.6	28.0	748.9	1.8	76 854
December Quarter	1 453.3	29.9	793.5	1.8	80 610
2009					
March Quarter	1 422.4	30.5	740.5	1.9	79 626
Year ended March 2008	5 704.5	28.8	3 174.0	1.8	299 032
Year ended March 2009	5 556.4	28.7	3 001.8	1.9	307 004
.....					
HOTELS MOTELS AND SERVICED APARTMENTS WITH 15 OR MORE ROOMS					
2008					
March Quarter	23 178.2	40.9	9 957.0	2.3	1 999 773
June Quarter	20 885.7	36.5	9 520.6	2.2	1 838 302
September Quarter	23 176.8	39.7	10 243.9	2.3	2 014 752
December Quarter	23 453.1	40.4	10 379.1	2.3	2 044 095
2009					
March Quarter	22 495.0	39.5	9 713.7	2.3	1 928 783
Year ended March 2008	91 081.7	40.1	40 678.6	2.2	7 610 124
Year ended March 2009	90 010.6	39.0	39 857.3	2.3	7 825 933
.....					
HOTELS MOTELS AND SERVICED APARTMENTS WITH 5 OR MORE ROOMS					
2008					
March Quarter	24 680.2	40.1	10 776.2	2.3	2 080 180
June Quarter	22 186.8	35.7	10 239.5	2.2	1 908 216
September Quarter	24 556.4	38.8	10 992.8	2.2	2 091 606
December Quarter	24 906.4	39.6	11 172.6	2.2	2 124 705
2009					
March Quarter	23 917.5	38.8	10 454.2	2.3	2 008 410
Year ended March 2008	96 786.2	39.2	43 852.6	2.2	7 909 156
Year ended March 2009	95 566.9	38.2	42 859.1	2.2	8 132 937

SUMMARY OF LICENSED HOTELS AND RESORTS, AUSTRALIA

	<i>Establishments</i>	<i>Rooms</i>	<i>Bed spaces</i>	<i>Persons employed</i>	<i>Room nights occupied</i>	<i>Room occupancy rate</i>
	no.	no.	no.	no.	'000	%
.....						
LICENSED HOTELS WITH 5 TO 14 ROOMS						
2008						
March Quarter	449	4 286	11 353	6 703	148.7	37.9
June Quarter	447	4 283	11 316	6 625	141.9	36.6
September Quarter	440	4 209	11 156	6 422	143.3	37.1
December Quarter	435	4 163	11 117	6 332	150.0	39.3
2009						
March Quarter	435	4 162	11 053	5 943	148.1	39.7
Year ended March 2008	582.4	37.5
Year ended March 2009	583.3	38.2
.....						
LICENSED HOTELS WITH 15 OR MORE ROOMS						
2008						
March Quarter	833	81 619	212 148	70 746	5 211.2	70.7
June Quarter	837	81 809	213 533	71 315	4 971.8	67.0
September Quarter	837	82 006	214 185	71 418	5 193.4	68.9
December Quarter	845	82 483	215 884	69 204	5 249.4	69.8
2009						
March Quarter	852	84 338	220 781	68 541	5 083.2	67.8
Year ended March 2008	20 890.2	70.5
Year ended March 2009	20 497.8	68.4
.....						
LICENSED HOTELS WITH 5 OR MORE ROOMS						
2008						
March Quarter	1 282	85 905	223 501	77 449	5 359.8	69.1
June Quarter	1 284	86 092	224 849	77 940	5 113.7	65.5
September Quarter	1 277	86 215	225 341	77 840	5 336.8	67.4
December Quarter	1 280	86 646	227 001	75 536	5 399.4	68.4
2009						
March Quarter	1 287	88 500	231 834	74 484	5 231.2	66.5
Year ended March 2008	21 472.6	68.9
Year ended March 2009	21 081.1	67.0
.....						
..	not applicable					

SUMMARY OF LICENSED HOTELS AND RESORTS, AUSTRALIA *continued*

	Guest nights occupied	Bed occupancy rate	Guest arrivals	Average length of stay	Takings from accommodation
	'000	%	'000	days	\$'000
.....					
LICENSED HOTELS WITH 5 TO 14 ROOMS					
2008					
March Quarter	230.7	22.2	133.4	1.7	11 227
June Quarter	212.8	20.8	121.5	1.8	10 537
September Quarter	211.9	20.7	119.3	1.8	10 739
December Quarter	229.4	22.5	135.1	1.7	11 856
2009					
March Quarter	225.6	22.8	129.3	1.7	12 137
Year ended March 2008	889.0	21.5	514.1	1.7	42 385
Year ended March 2009	879.7	21.7	505.2	1.7	45 269
.....					
LICENSED HOTELS WITH 15 OR MORE ROOMS					
2008					
March Quarter	8 449.8	44.3	3 695.7	2.3	969 473
June Quarter	7 625.2	39.4	3 583.9	2.1	880 064
September Quarter	8 231.0	41.9	3 734.6	2.2	933 441
December Quarter	8 422.8	43.0	3 804.4	2.2	964 352
2009					
March Quarter	8 297.6	42.6	3 648.4	2.3	912 295
Year ended March 2008	33 497.3	43.2	15 294.8	2.2	3 661 547
Year ended March 2009	32 576.6	41.7	14 771.2	2.2	3 690 153
.....					
LICENSED HOTELS WITH 5 OR MORE ROOMS					
2008					
March Quarter	8 680.6	43.1	3 829.2	2.3	980 700
June Quarter	7 838.0	38.5	3 705.3	2.1	890 602
September Quarter	8 442.8	40.8	3 853.9	2.2	944 180
December Quarter	8 652.3	42.0	3 939.5	2.2	976 208
2009					
March Quarter	8 523.2	41.6	3 777.7	2.3	924 432
Year ended March 2008	34 386.3	42.1	15 808.9	2.2	3 703 932
Year ended March 2009	33 456.3	40.7	15 276.4	2.2	3 735 422

SUMMARY OF MOTELS, PRIVATE HOTELS AND GUEST HOUSES, Australia

<i>Period</i>	<i>Establishments</i>	<i>Rooms</i>	<i>Bed spaces</i>	<i>Persons employed</i>	<i>Room nights occupied</i>	<i>Room occupancy rate</i>
	no.	no.	no.	no.	'000	%
.....						
MOTELS AND GUEST HOUSES WITH 5 TO 14 ROOMS						
2008						
March Quarter	1 134	11 255	31 467	3 857	483.9	47.7
June Quarter	1 125	11 193	31 239	3 811	449.9	44.7
September Quarter	1 111	11 057	30 885	3 758	459.0	45.4
December Quarter	1 108	10 994	30 692	3 720	474.7	47.7
2009						
March Quarter	1 085	10 753	30 035	3 494	446.0	47.4
Year ended March 2008	1 911.1	46.6
Year ended March 2009	1 829.6	46.3
.....						
MOTELS AND GUEST HOUSES WITH 15 OR MORE ROOMS						
2008						
March Quarter	2 479	87 562	250 523	29 914	4 583.0	58.0
June Quarter	2 484	87 880	251 304	29 837	4 529.0	57.0
September Quarter	2 484	87 902	250 858	30 014	4 769.8	59.0
December Quarter	2 475	87 718	250 123	29 240	4 697.3	58.7
2009						
March Quarter	2 483	87 602	249 403	28 531	4 389.1	56.4
Year ended March 2008	18 583.5	58.4
Year ended March 2009	18 385.2	57.8
.....						
MOTELS AND GUEST HOUSES WITH 5 OR MORE ROOMS						
2008						
March Quarter	3 613	98 817	281 990	33 771	5 067.0	56.8
June Quarter	3 609	99 073	282 543	33 648	4 978.9	55.6
September Quarter	3 595	98 959	281 743	33 772	5 228.8	57.5
December Quarter	3 583	98 712	280 815	32 960	5 172.0	57.5
2009						
March Quarter	3 568	98 355	279 438	32 025	4 835.1	55.4
Year ended March 2008	20 494.7	57.1
Year ended March 2009	20 214.8	56.5
.....						
..	not applicable					

<i>Period</i>	<i>Guest nights occupied</i> '000	<i>Bed occupancy rate</i> %	<i>Guest arrivals</i> '000	<i>Average length of stay</i> days	<i>Takings from accommodation</i> \$'000
---------------	--	--	-----------------------------------	---	---

MOTELS AND GUEST HOUSES WITH 5 TO 14 ROOMS

2008

March Quarter	876.7	30.9	541.3	1.6	48 121
June Quarter	767.8	27.3	474.0	1.6	42 560
September Quarter	802.4	28.4	495.3	1.6	46 253
December Quarter	840.3	30.3	517.0	1.6	47 781

2009

March Quarter	806.5	30.8	475.5	1.7	46 395
---------------	-------	------	-------	-----	--------

Year ended March 2008 3 388.0 29.4 2 109.7 1.6 181 221

Year ended March 2009 3 217.0 29.2 1 961.8 1.6 182 990

MOTELS AND GUEST HOUSES WITH 15 OR MORE ROOMS

2008

March Quarter	7 892.1	34.9	4 260.4	1.9	517 464
June Quarter	7 385.2	32.5	4 061.4	1.8	501 748
September Quarter	8 100.7	35.1	4 425.0	1.8	547 739
December Quarter	8 025.8	35.2	4 380.9	1.8	542 303

2009

March Quarter	7 555.5	34.2	4 052.5	1.9	505 881
---------------	---------	------	---------	-----	---------

Year ended March 2008 31 613.5 34.6 17 463.6 1.8 2 037 971

Year ended March 2009 31 067.1 34.3 16 919.8 1.8 2 097 671

MOTELS AND GUEST HOUSES WITH 5 OR MORE ROOMS

2008

March Quarter	8 768.8	34.5	4 801.8	1.8	565 585
June Quarter	8 152.9	31.9	4 535.4	1.8	544 309
September Quarter	8 903.1	34.4	4 920.4	1.8	593 992
December Quarter	8 866.1	34.7	4 897.9	1.8	590 084

2009

March Quarter	8 362.0	33.8	4 528.0	1.8	552 276
---------------	---------	------	---------	-----	---------

Year ended March 2008 35 001.4 34.0 19 573.3 1.8 2 219 192

Year ended March 2009 34 284.1 33.7 18 881.7 1.8 2 280 661

SUMMARY OF SERVICED APARTMENTS, Australia

<i>Period</i>	<i>Establishments</i>	<i>Rooms</i>	<i>Bed spaces</i>	<i>Persons employed</i>	<i>Room nights occupied</i>	<i>Room occupancy rate</i>
	no.	no.	no.	no.	'000	%
.....						
SERVICED APARTMENTS WITH 5 TO 14 ROOMS						
2008						
March Quarter	348	3 029	11 686	1 190	155.7	56.6
June Quarter	353	3 087	11 782	1 154	136.9	48.7
September Quarter	353	3 081	11 829	1 150	151.9	53.9
December Quarter	343	3 010	11 599	1 141	155.0	56.1
2009						
March Quarter	346	3 041	11 808	1 151	154.6	57.0
Year ended March 2008	589.7	54.6
Year ended March 2009	598.5	53.9
.....						
SERVICED APARTMENTS WITH 15 OR MORE ROOMS						
2008						
March Quarter	938	51 122	165 281	15 505	3 187.0	68.7
June Quarter	945	51 878	167 365	15 477	2 973.3	63.0
September Quarter	946	52 358	169 352	15 567	3 310.3	68.7
December Quarter	957	53 118	171 140	15 492	3 330.1	68.3
2009						
March Quarter	966	53 793	172 207	15 067	3 151.3	65.5
Year ended March 2008	12 375.8	68.8
Year ended March 2009	12 765.0	66.4
.....						
SERVICED APARTMENTS WITH 5 OR MORE ROOMS						
2008						
March Quarter	1 286	54 151	176 967	16 695	3 342.7	68.0
June Quarter	1 298	54 965	179 147	16 631	3 110.2	62.2
September Quarter	1 299	55 439	181 181	16 717	3 462.2	67.9
December Quarter	1 300	56 128	182 739	16 633	3 485.2	67.6
2009						
March Quarter	1 312	56 834	184 015	16 218	3 305.9	65.0
Year ended March 2008	12 965.5	68.0
Year ended March 2009	13 363.5	65.7
.....						
..	not applicable					

SUMMARY OF SERVICED APARTMENTS, Australia *continued*

<i>Period</i>	<i>Guest nights occupied</i>	<i>Bed occupancy rate</i>	<i>Guest arrivals</i>	<i>Average length of stay</i>	<i>Takings from accommodation</i>
	'000	%	'000	days	\$'000
.....					
SERVICED APARTMENTS WITH 5 TO 14 ROOMS					
2008					
March Quarter	394.6	37.2	144.5	2.7	21 058
June Quarter	320.6	29.9	123.5	2.6	16 816
September Quarter	365.3	33.7	134.3	2.7	19 862
December Quarter	383.6	36.0	141.3	2.7	20 972
2009					
March Quarter	390.3	37.1	135.7	2.9	21 094
Year ended March 2008	1 427.6	34.6	550.3	2.6	75 426
Year ended March 2009	1 459.7	34.2	534.8	2.7	78 745
.....					
SERVICED APARTMENTS WITH 15 OR MORE ROOMS					
2008					
March Quarter	6 836.3	45.6	2 000.8	3.4	512 836
June Quarter	5 875.3	38.6	1 875.3	3.1	456 490
September Quarter	6 845.1	44.0	2 084.3	3.3	533 572
December Quarter	7 004.4	44.6	2 193.9	3.2	537 440
2009					
March Quarter	6 642.0	43.2	2 012.7	3.3	510 608
Year ended March 2008	25 970.9	44.6	7 920.2	3.3	1 910 607
Year ended March 2009	26 366.8	42.6	8 166.2	3.2	2 038 109
.....					
SERVICED APARTMENTS WITH 5 OR MORE ROOMS					
2008					
March Quarter	7 230.9	45.0	2 145.2	3.4	533 894
June Quarter	6 195.9	38.1	1 998.8	3.1	473 306
September Quarter	7 210.4	43.3	2 218.6	3.3	553 434
December Quarter	7 388.0	44.1	2 335.2	3.2	558 412
2009					
March Quarter	7 032.2	42.8	2 148.4	3.3	531 702
Year ended March 2008	27 398.4	43.9	8 470.4	3.2	1 986 032
Year ended March 2009	27 826.6	42.1	8 701.0	3.2	2 116 853

CAPACITY

Period	Establishments no.	On-site vans no.	Other powered sites no.	Unpowered sites no.	Cabins, flats units and villas no.	Total capacity no.
CARAVAN PARKS, SHORT TERM (b)						
2008						
March Quarter	1 449	13 647	125 263	38 703	26 812	204 425
June Quarter	1 449	13 762	124 866	38 322	27 079	204 029
September Quarter	1 443	13 870	123 196	38 117	27 865	203 048
December Quarter	1 445	13 235	124 486	37 754	28 138	203 613
2009						
March Quarter	1 442	13 244	124 487	37 513	27 828	203 072
Year ended March 2008
Year ended March 2009
CARAVAN PARKS, LONG TERM (b)						
2008						
March Quarter	224	4 285	16 540	1 967	6 606	29 398
June Quarter	226	4 081	16 862	1 832	6 677	29 452
September Quarter	224	4 183	16 067	1 907	6 908	29 065
December Quarter	223	3 977	16 123	1 845	7 468	29 413
2009						
March Quarter	221	3 878	16 003	1 802	7 229	28 912
Year ended March 2008
Year ended March 2009
CARAVAN PARKS, TOTAL						
2008						
March Quarter	1 673	17 932	141 803	40 670	33 418	233 823
June Quarter	1 675	17 843	141 728	40 154	33 756	233 481
September Quarter	1 667	18 053	139 263	40 024	34 773	232 113
December Quarter	1 668	17 212	140 609	39 599	35 606	233 026
2009						
March Quarter	1 663	17 122	140 490	39 315	35 057	231 984
Year ended March 2008
Year ended March 2009

.. not applicable

(a) Comprising establishments with 40 or more powered sites and cabins, flats, units and villas

(b) For definitions of short-term and long-term caravan parks, see Glossary.

Period	Persons employed	Sites occupied by long-term guests	Other sites permanently reserved	Site nights occupied	Site occupancy rate	Takings from accommodation
	no.	no.	no.	'000	%	\$'000
CARAVAN PARKS, SHORT TERM (b)						
2008						
March Quarter	9 051	18 382	40 152	9 535.8	51.3	234 706
June Quarter	8 857	18 623	38 686	8 757.8	47.4	188 520
September Quarter	9 110	19 178	38 679	9 242.7	49.7	212 042
December Quarter	9 357	19 360	38 850	9 165.9	49.3	227 550
2009						
March Quarter	9 174	19 120	38 689	9 410.7	51.6	240 294
Year ended March 2008	36 913.5	49.7	831 362
Year ended March 2009	36 577.1	49.5	868 405
CARAVAN PARKS, LONG TERM (b)						
2008						
March Quarter	1 335	16 403	1 681	2 091.3	78.2	44 316
June Quarter	1 342	15 934	2 105	2 038.4	76.1	40 737
September Quarter	1 385	15 514	2 014	2 025.4	75.8	42 903
December Quarter	1 377	15 691	2 037	2 080.4	77.0	45 647
2009						
March Quarter	1 398	15 433	1 909	1 991.2	76.5	44 528
Year ended March 2008	8 352.7	76.7	169 156
Year ended March 2009	8 135.5	76.3	173 815
CARAVAN PARKS, TOTAL						
2008						
March Quarter	10 386	34 785	41 833	11 627.1	54.7	279 021
June Quarter	10 199	34 557	40 791	10 796.2	51.1	229 256
September Quarter	10 495	34 692	40 693	11 268.1	53.0	254 945
December Quarter	10 734	35 051	40 887	11 246.3	52.8	273 197
2009						
March Quarter	10 572	34 553	40 598	11 402.0	54.7	284 822
Year ended March 2008	45 266.2	53.2	1 000 518
Year ended March 2009	44 712.6	52.9	1 042 221

.. not applicable

(a) Comprising establishments with 40 or more powered sites and cabins, flats, units and villas

(b) For definitions of short-term and long-term caravan parks, see Glossary.

CAPACITY

Period	Letting	Single	Multiple	Total	Bed	Persons
	entities(a)	bedroom	bedroom		spaces	employed(b)
	no.	no.	no.	no.	no.	no.

REAL ESTATE AGENTS

2008						
March Quarter	155	653	13 070	13 723	76 903	..
June Quarter	158	571	12 954	13 525	76 139	..
September Quarter	158	609	13 004	13 613	75 318	..
December Quarter	157	664	13 298	13 962	75 924	..
2009						
March Quarter	157	736	13 346	14 082	77 959	..
Year ended March 2008
Year ended March 2009

OTHER LETTING ENTITIES

2008						
March Quarter	428	4 312	10 863	15 175	62 556	2 450
June Quarter	430	4 361	10 889	15 250	62 385	2 470
September Quarter	428	4 189	10 887	15 076	61 672	2 526
December Quarter	433	4 190	11 022	15 212	61 850	2 648
2009						
March Quarter	432	4 366	10 876	15 242	62 748	2 665
Year ended March 2008
Year ended March 2009

HOLIDAY FLATS AND UNITS

2008						
March Quarter	583	4 965	23 933	28 898	139 459	..
June Quarter	588	4 932	23 843	28 775	138 524	..
September Quarter	586	4 798	23 891	28 689	136 990	..
December Quarter	590	4 854	24 320	29 174	137 774	..
2009						
March Quarter	589	5 102	24 222	29 324	140 707	..
Year ended March 2008
Year ended March 2009

.. not applicable

(a) The number of owners, managers or real estate agents with 15 or more self-contained units

(b) Employment numbers exclude real estate agents and their employees

<i>Period</i>	<i>Unit nights occupied</i>	<i>Unit occupancy rate</i>	<i>Unit lettings</i>	<i>Average length of stay</i>	<i>Takings from accommodation</i>
	'000	%	'000	days	\$'000
.....					
REAL ESTATE AGENTS					
2008					
March Quarter	466.0	37.4	83.6	5.6	54 909
June Quarter	281.2	22.9	53.2	5.3	24 683
September Quarter	332.8	26.6	54.2	6.1	33 983
December Quarter	406.7	31.7	82.6	4.9	50 726
2009					
March Quarter	458.5	36.2	81.1	5.7	55 063
Year ended March 2008	1 492.4	30.0	282.6	5.3	161 575
Year ended March 2009	1 479.2	29.4	271.1	5.5	164 455
.....					
OTHER LETTING ENTITIES					
2008					
March Quarter	894.1	64.8	320.8	2.8	121 825
June Quarter	747.3	53.9	290.2	2.6	90 473
September Quarter	889.7	64.2	305.5	2.9	117 233
December Quarter	898.9	64.6	351.8	2.6	129 322
2009					
March Quarter	846.8	62.0	320.7	2.6	119 791
Year ended March 2008	3 534.1	64.2	1 261.3	2.8	455 598
Year ended March 2009	3 382.7	61.2	1 268.2	2.7	456 819
.....					
HOLIDAY FLATS AND UNITS					
2008					
March Quarter	1 360.2	51.8	404.4	3.4	176 734
June Quarter	1 028.5	39.3	343.4	3.0	115 157
September Quarter	1 222.5	46.3	359.7	3.4	151 216
December Quarter	1 305.6	48.8	434.4	3.0	180 048
2009					
March Quarter	1 305.3	49.6	401.8	3.2	174 854
Year ended March 2008	5 026.5	48.0	1 543.9	3.3	617 173
Year ended March 2009	4 861.9	46.0	1 539.3	3.2	621 274

SUMMARY OF VISITOR HOSTELS(a), Australia

<i>Period</i>	<i>Establishments</i>	<i>Bed spaces</i>	<i>Persons employed</i>	<i>Guest arrivals</i>	<i>Guest nights occupied</i>	<i>Bed occupancy rate</i>	<i>Average length of stay</i>	<i>Takings from accommodation</i>
<i>no.</i>	<i>no.</i>	<i>no.</i>	<i>no.</i>	<i>no.</i>	<i>no.</i>	<i>%</i>	<i>days</i>	<i>\$'000</i>
2008								
March Quarter	415	46 386	3 391	824 970	2 399 726	57.2	2.9	62 546
June Quarter	414	46 671	3 340	751 195	2 125 826	50.1	2.8	54 057
September Quarter	413	46 175	3 394	763 615	2 214 908	52.2	2.9	59 754
December Quarter	407	45 921	3 385	757 660	2 373 677	56.5	3.1	63 373
2009								
March Quarter	406	45 847	3 396	796 892	2 426 755	59.2	3.0	66 519
Year ended March 2008	3 011 619	8 781 928	51.4	2.9	223 571
Year ended March 2009	3 069 362	9 141 166	54.4	3.0	243 704

.. not applicable

(a) Comprising establishments with 25 or more bed spaces.

STAR GRADING

<i>Period</i>	1	2	3	4	5	<i>Ungraded</i>	<i>Total</i>
---------------	---	---	---	---	---	-----------------	--------------

ESTABLISHMENTS, CAPACITY AND EMPLOYMENT (no.)

March Quarter 2008

Establishments	80	295	865	382	21	288	1 931
Rooms	770	2 866	8 939	3 161	171	2 663	18 570
Bed spaces	1 884	8 275	26 580	9 697	385	7 685	54 506
Persons employed	970	2 431	3 806	1 513	200	2 830	11 750

March Quarter 2009

Establishments	69	287	857	365	24	264	1 866
Rooms	658	2 780	8 824	3 023	208	2 463	17 956
Bed spaces	1 605	7 940	26 320	9 342	564	7 125	52 896
Persons employed	816	2 210	3 692	1 387	164	2 319	10 588

ROOM NIGHTS OCCUPIED ('000)

2008

<i>March Quarter</i>	20.9	99.3	423.3	150.1	7.1	87.6	788.3
----------------------	------	------	-------	-------	-----	------	-------

2009

January	6.7	32.4	148.6	51.8	3.3	28.9	271.7
February	5.8	28.4	116.9	40.2	2.4	24.1	217.9
March	6.6	33.5	140.6	46.7	2.7	28.9	259.0
<i>March Quarter</i>	19.1	94.4	406.2	138.7	8.4	81.9	748.7

ROOM OCCUPANCY RATE (%)

2008

<i>March Quarter</i>	29.8	37.8	52.3	52.3	45.7	37.0	46.9
----------------------	------	------	------	------	------	------	------

2009

January	33.1	38.0	55.4	55.7	50.9	40.0	49.8
February	32.1	37.0	48.3	48.1	42.0	37.0	44.3
March	33.2	39.0	52.1	50.2	42.8	39.6	47.3
<i>March Quarter</i>	32.8	38.0	52.1	51.5	45.4	38.9	47.2

GUEST NIGHTS OCCUPIED ('000)

2008

<i>March Quarter</i>	31.1	169.8	796.4	335.7	13.3	155.8	1 502.0
----------------------	------	-------	-------	-------	------	-------	---------

2009

January	10.4	58.0	304.9	129.4	7.1	54.4	564.2
February	8.2	46.4	205.1	85.6	5.0	39.7	390.0
March	9.7	56.6	248.3	100.2	5.4	48.0	468.2
<i>March Quarter</i>	28.4	161.0	758.2	315.2	17.6	142.0	1 422.4

BED OCCUPANCY RATE (%)

2008

<i>March Quarter</i>	18.2	22.4	33.1	38.1	37.9	22.8	30.4
----------------------	------	------	------	------	------	------	------

2009

January	21.2	23.9	38.2	45.0	40.8	26.3	35.2
February	18.6	21.2	28.5	33.3	32.2	21.2	27.0
March	19.9	23.1	30.9	34.9	31.2	22.9	29.1
<i>March Quarter</i>	20.0	22.8	32.7	37.9	34.8	23.6	30.5

continued

Period	STAR GRADING						Total
	1	2	3	4	5	Ungraded	
GUEST ARRIVALS ('000)							
2008							
March Quarter	20.1	100.9	458.3	152.7	6.7	80.4	819.2
2009							
January	6.3	31.8	163.2	50.5	2.6	26.3	280.8
February	5.1	26.2	115.9	39.0	2.0	20.1	208.3
March	6.2	31.4	141.5	45.2	2.3	24.7	251.4
March Quarter	17.7	89.4	420.6	134.7	6.9	71.1	740.5
AVERAGE LENGTH OF STAY (days)							
2008							
March Quarter	1.5	1.7	1.7	2.2	2.0	1.9	1.8
2009							
January	1.7	1.8	1.9	2.6	2.7	2.1	2.0
February	1.6	1.8	1.8	2.2	2.5	2.0	1.9
March	1.6	1.8	1.8	2.2	2.3	1.9	1.9
March Quarter	1.6	1.8	1.8	2.3	2.5	2.0	1.9
TAKINGS FROM ACCOMMODATION (\$'000)							
2008							
March Quarter	1 204	6 973	38 650	23 306	1 853	8 421	80 407
2009							
January	478	2 397	14 880	8 725	953	3 070	30 504
February	383	2 026	11 023	6 181	621	2 379	22 614
March	410	2 406	12 958	7 163	777	2 795	26 509
March Quarter	1 271	6 828	38 861	22 069	2 352	8 245	79 626
AVERAGE TAKINGS PER ROOM NIGHT OCCUPIED (\$)							
2008							
March Quarter	57.69	70.23	91.30	155.28	260.63	96.10	102.00
2009							
January	71.58	73.92	100.12	168.42	291.49	106.27	112.27
February	66.12	71.25	94.26	153.67	260.02	98.54	103.77
March	61.65	71.81	92.16	153.55	282.66	96.79	102.34
March Quarter	66.47	72.37	95.68	159.14	279.66	100.65	106.36
AVERAGE TAKINGS PER ROOM NIGHT AVAILABLE (\$)							
2008							
March Quarter	17.22	26.53	47.76	81.22	119.13	35.54	47.82
2009							
January	23.71	28.06	55.51	93.89	148.45	42.47	55.94
February	21.22	26.34	45.56	73.94	109.29	36.47	46.02
March	20.49	28.02	48.02	77.09	120.88	38.28	48.37
March Quarter	21.83	27.51	49.83	81.91	126.88	39.16	50.24

STAR GRADING

<i>Period</i>	1	2	3	4	5	<i>Ungraded</i>	<i>Total</i>
---------------	---	---	---	---	---	-----------------	--------------

ESTABLISHMENTS, CAPACITY AND EMPLOYMENT (no.)

March Quarter 2008

Establishments	48	282	2 122	1 468	119	211	4 250
Rooms	1 449	8 842	76 533	102 613	24 290	6 576	220 303
Bed spaces	4 852	25 240	223 025	295 548	60 945	18 342	627 952
Persons employed	540	3 381	25 600	50 534	33 005	3 105	116 165

March Quarter 2009

Establishments	46	294	2 195	1 435	123	208	4 301
Rooms	1 432	9 319	79 387	104 230	24 908	6 457	225 733
Bed spaces	4 638	26 526	230 048	300 103	63 561	17 515	642 391
Persons employed	472	3 435	25 373	47 814	31 946	3 099	112 139

ROOM NIGHTS OCCUPIED ('000)

2008

<i>March Quarter</i>	42.3	398.8	4 060.1	6 541.0	1 636.5	302.5	12 981.2
----------------------	------	-------	---------	---------	---------	-------	----------

2009

January	13.9	135.2	1 371.6	2 163.9	522.2	85.9	4 292.8
February	12.1	124.5	1 227.5	1 964.9	499.4	82.3	3 910.6
March	13.2	142.3	1 426.4	2 193.2	550.6	94.5	4 420.2
<i>March Quarter</i>	39.2	402.0	4 025.5	6 322.0	1 572.2	262.7	12 623.6

ROOM OCCUPANCY RATE (%)

2008

<i>March Quarter</i>	33.8	50.4	58.9	70.2	74.0	52.1	65.2
----------------------	------	------	------	------	------	------	------

2009

January	40.7	47.4	56.6	67.3	67.7	47.0	62.1
February	39.9	48.2	56.1	67.6	72.5	48.3	62.7
March	38.8	49.8	58.8	68.0	71.4	49.9	63.8
<i>March Quarter</i>	39.8	48.5	57.2	67.6	70.4	48.4	62.9

GUEST NIGHTS OCCUPIED ('000)

2008

<i>March Quarter</i>	76.7	682.0	7 366.9	11 956.8	2 614.7	481.2	23 178.2
----------------------	------	-------	---------	----------	---------	-------	----------

2009

January	22.2	247.5	2 737.1	4 442.4	933.2	155.1	8 537.4
February	18.3	207.8	2 086.1	3 321.3	761.1	130.8	6 525.5
March	20.3	240.3	2 445.1	3 738.6	840.3	147.6	7 432.2
<i>March Quarter</i>	60.8	695.6	7 268.3	11 502.3	2 534.6	433.5	22 495.0

BED OCCUPANCY RATE (%)

2008

<i>March Quarter</i>	18.7	30.4	36.8	44.6	47.1	30.1	40.9
----------------------	------	------	------	------	------	------	------

2009

January	24.8	30.9	39.0	48.0	47.4	31.9	43.5
February	22.9	28.6	33.0	39.7	43.6	28.8	36.9
March	22.6	29.9	34.9	40.3	42.7	29.2	37.8
<i>March Quarter</i>	23.5	29.8	35.7	42.8	44.6	30.0	39.5

Period	STAR GRADING						Total
	1	2	3	4	5	Ungraded	
GUEST ARRIVALS ('000)							
2008							
<i>March Quarter</i>	45.6	392.5	3 558.5	4 732.7	1 032.1	195.6	9 957.0
2009							
January	12.9	131.6	1 306.8	1 599.3	329.7	64.7	3 445.0
February	10.0	112.2	1 054.3	1 388.3	312.2	57.4	2 934.5
March	10.5	130.7	1 235.0	1 550.8	340.2	67.1	3 334.2
<i>March Quarter</i>	33.4	374.5	3 596.1	4 538.3	982.1	189.3	9 713.7
AVERAGE LENGTH OF STAY (days)							
2008							
<i>March Quarter</i>	1.7	1.7	2.1	2.5	2.5	2.5	2.3
2009							
January	1.7	1.9	2.1	2.8	2.8	2.4	2.5
February	1.8	1.9	2.0	2.4	2.4	2.3	2.2
March	1.9	1.8	2.0	2.4	2.5	2.2	2.2
<i>March Quarter</i>	1.8	1.9	2.0	2.5	2.6	2.3	2.3
TAKINGS FROM ACCOMMODATION (\$'000)							
2008							
<i>March Quarter</i>	3 072	32 271	440 555	1 064 435	422 944	36 496	1 999 773
2009							
January	1 007	11 945	157 948	359 199	130 644	11 465	672 207
February	861	10 497	133 788	313 449	120 481	10 364	589 441
March	940	12 134	156 668	352 186	133 591	11 617	667 136
<i>March Quarter</i>	2 808	34 576	448 403	1 024 834	384 716	33 446	1 928 783
AVERAGE TAKINGS PER ROOM NIGHT OCCUPIED (\$)							
2008							
<i>March Quarter</i>	72.55	80.92	108.51	162.73	258.45	120.64	154.05
2009							
January	72.42	88.33	115.16	166.00	250.16	133.41	156.59
February	71.32	84.32	108.99	159.53	241.24	125.99	150.73
March	70.96	85.27	109.84	160.58	242.64	122.94	150.93
<i>March Quarter</i>	71.59	86.01	111.39	162.11	244.69	127.32	152.79
AVERAGE TAKINGS PER ROOM NIGHT AVAILABLE (\$)							
2008							
<i>March Quarter</i>	24.50	40.76	63.95	114.25	191.36	62.83	100.42
2009							
January	29.50	41.88	65.16	111.73	169.39	62.76	97.25
February	28.48	40.65	61.12	107.90	174.80	60.83	94.43
March	27.54	42.44	64.61	109.20	173.21	61.28	96.26
<i>March Quarter</i>	28.51	41.69	63.71	109.66	172.38	61.64	96.03

STAR GRADING

<i>Period</i>	1	2	3	4	5	<i>Ungraded</i>	<i>Total</i>
---------------	---	---	---	---	---	-----------------	--------------

ESTABLISHMENTS, CAPACITY AND EMPLOYMENT (no.)

March Quarter 2008

Establishments	128	577	2 987	1 850	140	499	6 181
Rooms	2 219	11 708	85 472	105 774	24 461	9 239	238 873
Bed spaces	6 736	33 515	249 605	305 245	61 330	26 027	682 458
Persons employed	1 510	5 812	29 406	52 047	33 205	5 935	127 915

March Quarter 2009

Establishments	115	581	3 052	1 800	147	472	6 167
Rooms	2 090	12 099	88 211	107 253	25 116	8 920	243 689
Bed spaces	6 243	34 466	256 368	309 445	64 125	24 640	695 287
Persons employed	1 288	5 645	29 065	49 201	32 110	5 418	122 727

ROOM NIGHTS OCCUPIED ('000)

2008

<i>March Quarter</i>	63.2	498.1	4 483.4	6 691.1	1 643.6	390.1	13 769.5
----------------------	------	-------	---------	---------	---------	-------	----------

2009

January	20.6	167.7	1 520.2	2 215.7	525.5	114.8	4 564.5
February	17.9	152.9	1 344.5	2 005.1	501.8	106.4	4 128.6
March	19.9	175.8	1 567.0	2 239.9	553.3	123.4	4 679.2
<i>March Quarter</i>	58.3	496.4	4 431.6	6 460.6	1 580.6	344.6	13 372.3

ROOM OCCUPANCY RATE (%)

2008

<i>March Quarter</i>	32.4	47.2	58.2	69.7	73.8	47.7	63.8
----------------------	------	------	------	------	------	------	------

2009

January	37.9	45.2	56.5	67.0	67.6	45.0	61.2
February	37.0	45.6	55.3	67.1	72.2	45.2	61.3
March	36.8	47.3	58.1	67.5	71.2	47.0	62.6
<i>March Quarter</i>	37.2	46.1	56.7	67.2	70.2	45.8	61.7

GUEST NIGHTS OCCUPIED ('000)

2008

<i>March Quarter</i>	107.8	851.7	8 163.3	12 292.5	2 628.0	636.9	24 680.2
----------------------	-------	-------	---------	----------	---------	-------	----------

2009

January	32.6	305.5	3 041.9	4 571.8	940.3	209.4	9 101.6
February	26.5	254.3	2 291.2	3 406.9	766.1	170.5	6 915.5
March	30.0	296.9	2 693.3	3 838.8	845.7	195.6	7 900.4
<i>March Quarter</i>	89.2	856.6	8 026.5	11 817.5	2 552.2	575.6	23 917.5

BED OCCUPANCY RATE (%)

2008

<i>March Quarter</i>	18.5	28.4	36.4	44.4	47.1	27.9	40.1
----------------------	------	------	------	------	------	------	------

2009

January	23.5	29.2	39.0	47.9	47.4	30.2	42.9
February	21.4	26.9	32.5	39.5	43.5	26.6	36.1
March	21.7	28.3	34.5	40.1	42.6	27.3	37.1
<i>March Quarter</i>	22.2	28.2	35.4	42.6	44.5	28.1	38.8

Period	STAR GRADING						Total
	1	2	3	4	5	Ungraded	
GUEST ARRIVALS ('000)							
2008							
<i>March Quarter</i>	65.7	493.4	4 016.8	4 885.4	1 038.8	276.0	10 776.2
2009							
January	19.2	163.5	1 470.0	1 649.8	332.3	91.0	3 725.8
February	15.2	138.4	1 170.3	1 427.3	314.2	77.5	3 142.8
March	16.7	162.1	1 376.5	1 596.0	342.5	91.8	3 585.6
<i>March Quarter</i>	51.0	463.9	4 016.8	4 673.0	989.0	260.4	10 454.2
AVERAGE LENGTH OF STAY (days)							
2008							
<i>March Quarter</i>	1.6	1.7	2.0	2.5	2.5	2.3	2.3
2009							
January	1.7	1.9	2.1	2.8	2.8	2.3	2.4
February	1.7	1.8	2.0	2.4	2.4	2.2	2.2
March	1.8	1.8	2.0	2.4	2.5	2.1	2.2
<i>March Quarter</i>	1.7	1.8	2.0	2.5	2.6	2.2	2.3
TAKINGS FROM ACCOMMODATION (\$'000)							
2008							
<i>March Quarter</i>	4 276	39 244	479 205	1 087 741	424 797	44 916	2 080 180
2009							
January	1 485	14 342	172 828	367 924	131 597	14 535	702 711
February	1 244	12 522	144 811	319 630	121 103	12 744	612 054
March	1 350	14 539	169 625	359 349	134 368	14 413	693 645
<i>March Quarter</i>	4 079	41 404	487 264	1 046 903	387 068	41 691	2 008 410
AVERAGE TAKINGS PER ROOM NIGHT OCCUPIED (\$)							
2008							
<i>March Quarter</i>	67.64	78.79	106.88	162.57	258.45	115.13	151.07
2009							
January	72.15	85.55	113.69	166.05	250.42	126.58	153.95
February	69.64	81.89	107.71	159.41	241.33	119.76	148.25
March	67.85	82.70	108.25	160.43	242.84	116.82	148.24
<i>March Quarter</i>	69.91	83.41	109.95	162.04	244.88	120.98	150.19
AVERAGE TAKINGS PER ROOM NIGHT AVAILABLE (\$)							
2008							
<i>March Quarter</i>	21.89	37.21	62.25	113.27	190.85	54.92	96.32
2009							
January	27.34	38.69	64.20	111.23	169.22	57.00	94.23
February	25.77	37.37	59.57	106.95	174.27	54.09	90.90
March	24.94	39.11	62.95	108.30	172.78	54.89	92.75
<i>March Quarter</i>	26.03	38.42	62.33	108.89	172.01	55.35	92.68

Period	New South Wales	Victoria	Queensland	South Australia	Western Australia	Tasmania	Northern Territory	Australian Capital Territory	Australia
ESTABLISHMENTS (no.)									
2008									
March Quarter	617	459	427	144	147	123	11	3	1 931
June Quarter	612	459	427	142	146	124	12	3	1 925
September Quarter	606	455	419	141	143	121	16	3	1 904
December Quarter	603	449	413	141	139	122	16	3	1 886
2009									
March Quarter	597	443	409	136	143	121	14	3	1 866
ROOMS (no.)									
2008									
March Quarter	6 087	4 445	4 244	1 381	1 252	1 013	np	np	18 570
June Quarter	6 055	4 459	4 241	1 370	1 247	np	127	np	18 563
September Quarter	6 010	4 416	4 155	1 341	1 221	1 021	153	30	18 347
December Quarter	5 970	4 369	4 065	1 356	1 194	1 032	151	30	18 167
2009									
March Quarter	5 924	4 288	4 034	1 281	1 238	1 024	np	np	17 956
BED SPACES (no.)									
2008									
March Quarter	17 537	12 839	13 359	3 561	4 002	2 783	np	np	54 506
June Quarter	17 513	12 796	13 355	3 518	3 885	np	362	np	54 337
September Quarter	17 383	12 743	13 065	3 482	3 860	2 818	434	85	53 870
December Quarter	17 306	12 500	12 866	3 558	3 800	2 863	430	85	53 408
2009									
March Quarter	17 212	12 320	12 737	3 410	3 972	2 782	np	np	52 896
PERSONS EMPLOYED (no.)									
2008									
March Quarter	3 139	2 629	2 190	1 856	1 015	858	np	np	11 750
June Quarter	3 062	2 613	2 149	1 847	1 006	np	58	np	11 590
September Quarter	3 004	2 529	2 101	1 845	949	800	82	20	11 330
December Quarter	2 938	2 535	2 025	1 870	902	829	76	18	11 193
2009									
March Quarter	2 797	2 447	1 949	1 677	866	779	np	np	10 588
ROOM NIGHTS OCCUPIED ('000)									
2008									
March Quarter	244.4	182.3	190.8	51.8	57.0	56.4	np	np	788.3
June Quarter	226.2	155.9	203.6	45.5	53.4	np	5.4	np	728.7
September Quarter	234.2	154.4	227.4	45.8	53.4	30.6	7.0	1.6	754.3
December Quarter	243.7	174.0	204.6	52.0	53.7	44.6	5.4	1.7	779.7
2009									
March Quarter	240.5	169.4	179.0	48.8	50.2	55.5	np	np	748.7
ROOM OCCUPANCY RATE (%)									
2008									
March Quarter	44.2	45.4	49.6	41.3	50.7	61.6	np	np	46.9
June Quarter	41.6	38.7	52.9	36.6	47.3	np	49.3	np	43.5
September Quarter	42.6	38.2	59.5	37.4	48.0	32.9	49.4	57.5	44.9
December Quarter	45.3	43.5	55.0	41.9	50.0	47.3	39.1	60.5	47.2
2009									
March Quarter	46.1	45.1	49.8	42.8	46.5	60.9	np	np	47.2

np not available for publication but included in totals where applicable, unless otherwise indicated

<i>Period</i>	<i>New South Wales</i>	<i>Victoria</i>	<i>Queensland</i>	<i>South Australia</i>	<i>Western Australia</i>	<i>Tasmania</i>	<i>Northern Territory</i>	<i>Australian Capital Territory</i>	<i>Australia</i>
GUEST NIGHTS OCCUPIED ('000)									
2008									
March Quarter	460.7	348.8	363.2	85.9	121.6	113.7	np	np	1 502.0
June Quarter	400.7	275.3	369.8	72.4	105.5	np	8.7	np	1 301.1
September Quarter	428.3	280.7	421.9	73.4	106.6	55.4	11.3	2.1	1 379.6
December Quarter	447.0	317.6	389.8	86.1	115.4	87.2	8.0	2.1	1 453.3
2009									
March Quarter	451.3	318.9	341.6	82.4	109.0	111.0	np	np	1 422.4
BED OCCUPANCY RATE (%)									
2008									
March Quarter	29.0	30.1	30.0	26.5	33.8	45.2	np	np	30.4
June Quarter	25.5	23.8	30.5	22.6	30.0	np	28.2	np	26.5
September Quarter	26.9	24.1	35.1	23.1	30.3	21.6	28.3	26.3	28.0
December Quarter	28.7	27.8	33.1	26.4	33.5	33.3	20.3	27.0	29.9
2009									
March Quarter	29.9	29.7	30.1	27.2	31.2	44.8	np	np	30.5
GUEST ARRIVALS ('000)									
2008									
March Quarter	254.0	209.9	178.0	47.6	54.6	69.7	np	np	819.2
June Quarter	226.1	171.5	182.5	41.3	49.8	np	5.5	np	718.9
September Quarter	244.3	172.7	202.0	42.5	46.3	32.8	7.0	1.3	748.9
December Quarter	256.2	197.8	182.1	49.5	51.4	49.9	5.1	1.4	793.5
2009									
March Quarter	242.0	186.1	155.9	44.8	43.5	62.6	np	np	740.5
AVERAGE LENGTH OF STAY (days)									
2008									
March Quarter	1.8	1.7	2.0	1.8	2.2	1.6	np	np	1.8
June Quarter	1.8	1.6	2.0	1.8	2.1	np	1.6	np	1.8
September Quarter	1.8	1.6	2.1	1.7	2.3	1.7	1.6	1.6	1.8
December Quarter	1.7	1.6	2.1	1.7	2.2	1.7	1.6	1.5	1.8
2009									
March Quarter	1.9	1.7	2.2	1.8	2.5	1.8	np	np	1.9
TAKINGS FROM ACCOMMODATION (\$'000)									
2008									
March Quarter	24 426	18 933	17 613	4 505	7 621	6 825	np	np	80 407
June Quarter	20 899	15 035	18 516	3 844	6 700	np	554	np	69 914
September Quarter	24 230	15 540	21 536	3 797	7 055	3 335	1 244	117	76 854
December Quarter	24 289	18 158	19 657	4 535	7 610	5 275	963	123	80 610
2009									
March Quarter	25 323	17 730	17 211	4 327	7 242	6 913	np	np	79 626
AVERAGE TAKINGS PER ROOM NIGHT OCCUPIED (\$)									
2008									
March Quarter	99.93	103.86	92.33	86.99	133.72	121.10	np	np	102.00
June Quarter	92.37	96.41	90.94	84.44	125.56	np	102.72	np	95.94
September Quarter	103.45	100.67	94.73	82.89	132.10	109.10	178.85	73.73	101.89
December Quarter	99.65	104.33	96.09	87.25	141.63	118.36	177.17	73.43	103.38
2009									
March Quarter	105.28	104.66	96.14	88.73	144.13	124.47	np	np	106.36

np not available for publication but included in totals where applicable, unless otherwise indicated

<i>Period</i>	<i>New South Wales</i>	<i>Victoria</i>	<i>Queensland</i>	<i>South Australia</i>	<i>Western Australia</i>	<i>Tasmania</i>	<i>Northern Territory</i>	<i>Australian Capital Territory</i>	<i>Australia</i>
AVERAGE TAKINGS PER ROOM NIGHT AVAILABLE (\$)									
2008									
March Quarter	44.15	47.18	45.82	35.89	67.76	74.57	np	np	47.82
June Quarter	38.42	37.30	48.13	30.88	59.36	np	50.62	np	41.70
September Quarter	44.09	38.43	56.34	31.03	63.36	35.90	88.38	42.40	45.76
December Quarter	45.17	45.34	52.88	36.58	70.79	55.95	69.30	44.46	48.78
2009									
March Quarter	48.54	47.16	47.90	37.98	67.07	75.76	np	np	50.24

np not available for publication but included in totals where applicable, unless otherwise indicated

<i>Period</i>	<i>New South Wales</i>	<i>Victoria</i>	<i>Queensland</i>	<i>South Australia</i>	<i>Western Australia</i>	<i>Tasmania</i>	<i>Northern Territory</i>	<i>Australian Capital Territory</i>	<i>Australia</i>
ESTABLISHMENTS (no.)									
2008									
March Quarter	1 427	797	1 118	254	350	157	92	55	4 250
June Quarter	1 436	805	1 116	257	350	157	91	54	4 266
September Quarter	1 434	801	1 117	257	352	155	95	56	4 267
December Quarter	1 432	800	1 131	258	351	154	95	56	4 277
2009									
March Quarter	1 428	813	1 138	263	352	153	98	56	4 301
ROOMS (no.)									
2008									
March Quarter	70 292	37 963	60 579	11 707	21 460	6 623	6 603	5 076	220 303
June Quarter	71 033	38 464	60 422	11 861	21 561	6 598	6 584	5 044	221 567
September Quarter	71 025	38 466	60 655	11 831	21 527	6 583	7 025	5 154	222 266
December Quarter	70 989	38 666	61 521	11 860	21 568	6 579	7 015	5 121	223 319
2009									
March Quarter	71 466	39 439	62 041	12 069	21 634	6 614	7 411	5 059	225 733
BED SPACES (no.)									
2008									
March Quarter	194 780	103 803	186 198	32 075	57 720	18 696	19 727	14 953	627 952
June Quarter	196 653	105 749	186 318	32 371	57 950	18 600	19 764	14 797	632 202
September Quarter	196 503	105 296	188 168	32 414	57 990	18 453	20 435	15 136	634 395
December Quarter	196 431	106 231	190 175	32 476	57 936	18 513	20 378	15 007	637 147
2009									
March Quarter	198 519	107 016	191 979	32 973	57 831	18 528	20 701	14 844	642 391
PERSONS EMPLOYED (no.)									
2008									
March Quarter	33 497	21 918	32 251	7 183	11 201	4 656	2 941	2 518	116 165
June Quarter	33 608	21 979	32 396	7 171	11 319	4 509	3 079	2 568	116 629
September Quarter	33 670	21 903	32 473	7 290	11 189	4 640	3 253	2 581	116 999
December Quarter	32 936	21 855	31 022	7 002	10 921	4 696	3 037	2 467	113 936
2009									
March Quarter	31 759	21 922	30 017	7 152	10 715	4 842	3 209	2 523	112 139
ROOM NIGHTS OCCUPIED ('000)									
2008									
March Quarter	4 170.0	2 303.7	3 366.3	699.5	1 354.7	446.1	331.3	309.7	12 981.2
June Quarter	3 853.0	2 196.6	3 380.5	657.6	1 319.4	321.9	413.2	331.8	12 474.1
September Quarter	4 045.5	2 216.6	3 873.6	665.6	1 353.2	286.1	505.3	327.8	13 273.6
December Quarter	4 117.3	2 289.9	3 703.3	701.9	1 365.4	388.5	387.6	322.9	13 276.8
2009									
March Quarter	4 015.1	2 274.8	3 246.4	678.7	1 318.5	446.9	321.8	321.2	12 623.6
Year ended March 2008	16 110.4	8 874.3	14 421.4	2 731.0	5 386.4	1 435.9	1 598.7	1 291.4	51 849.5
Year ended March 2009	16 031.0	8 977.8	14 203.9	2 703.8	5 356.5	1 443.4	1 627.9	1 303.7	51 648.0

<i>Period</i>	<i>New South Wales</i>	<i>Victoria</i>	<i>Queensland</i>	<i>South Australia</i>	<i>Western Australia</i>	<i>Tasmania</i>	<i>Northern Territory</i>	<i>Australian Capital Territory</i>	<i>Australia</i>
ROOM OCCUPANCY RATE (%)									
2008									
March Quarter	65.7	67.5	61.4	65.7	69.6	74.3	55.3	67.1	65.2
June Quarter	60.1	63.0	61.5	61.0	67.5	53.7	69.0	72.3	62.1
September Quarter	61.9	62.7	69.6	61.1	68.4	47.2	78.2	69.1	65.0
December Quarter	63.9	65.4	65.5	64.4	68.8	64.2	60.2	68.8	65.1
2009									
March Quarter	63.5	65.5	58.3	62.5	68.1	75.1	49.7	70.6	62.9
Year ended March 2008	63.7	64.6	66.3	64.1	69.3	60.0	65.9	70.8	65.3
Year ended March 2009	62.4	64.1	63.7	62.3	68.2	60.0	64.2	70.2	63.8
GUEST NIGHTS OCCUPIED ('000)									
2008									
March Quarter	7 314.3	3 917.3	6 629.7	1 139.4	2 266.7	860.7	558.8	491.3	23 178.2
June Quarter	6 310.2	3 537.7	6 176.5	1 019.9	2 070.9	559.7	684.3	526.5	20 885.7
September Quarter	6 943.4	3 716.5	7 407.7	1 050.0	2 156.7	508.5	852.2	541.9	23 176.8
December Quarter	7 145.1	3 828.7	7 209.8	1 136.2	2 252.3	711.0	634.4	535.7	23 453.1
2009									
March Quarter	7 089.5	3 883.4	6 323.8	1 121.0	2 196.9	853.7	515.9	510.8	22 495.0
Year ended March 2008	27 622.3	14 886.0	27 904.1	4 381.5	8 851.5	2 625.2	2 713.8	2 097.3	91 081.7
Year ended March 2009	27 488.2	14 966.3	27 117.7	4 327.1	8 676.7	2 632.8	2 686.7	2 115.0	90 010.6
BED OCCUPANCY RATE (%)									
2008									
March Quarter	41.7	42.2	39.3	39.0	43.3	50.8	31.3	36.1	40.9
June Quarter	35.6	37.0	36.4	34.7	39.4	33.1	38.0	39.1	36.5
September Quarter	38.4	38.4	42.9	35.2	40.5	30.0	45.3	38.9	39.7
December Quarter	40.2	40.1	41.2	38.1	42.3	41.7	33.9	38.9	40.4
2009									
March Quarter	40.6	41.6	36.7	37.8	42.5	51.2	28.4	38.2	39.5
Year ended March 2008	39.2	39.8	41.6	37.7	42.0	38.4	37.1	39.0	40.1
Year ended March 2009	38.7	39.2	39.3	36.4	41.1	39.0	36.5	38.8	39.0
GUEST ARRIVALS ('000)									
2008									
March Quarter	3 358.0	1 787.8	2 421.3	552.6	869.3	462.3	289.6	216.2	9 957.0
June Quarter	3 143.5	1 732.7	2 415.1	515.1	858.1	298.3	306.8	250.9	9 520.6
September Quarter	3 372.6	1 753.1	2 761.6	536.7	902.9	262.6	392.7	261.6	10 243.9
December Quarter	3 442.3	1 843.7	2 675.8	572.6	921.1	373.7	305.7	244.2	10 379.1
2009									
March Quarter	3 283.8	1 773.5	2 318.6	548.8	861.2	440.3	250.9	236.5	9 713.7
Year ended March 2008	13 454.0	7 058.6	10 567.1	2 211.9	3 605.5	1 400.7	1 422.8	957.9	40 678.6
Year ended March 2009	13 242.3	7 103.0	10 171.2	2 173.3	3 543.2	1 374.9	1 256.1	993.3	39 857.3

<i>Period</i>	<i>New South Wales</i>	<i>Victoria</i>	<i>Queensland</i>	<i>South Australia</i>	<i>Western Australia</i>	<i>Tasmania</i>	<i>Northern Territory</i>	<i>Australian Capital Territory</i>	<i>Australia</i>
AVERAGE LENGTH OF STAY (<i>days</i>)									
2008									
March Quarter	2.2	2.2	2.7	2.1	2.6	1.9	1.9	2.3	2.3
June Quarter	2.0	2.0	2.6	2.0	2.4	1.9	2.2	2.1	2.2
September Quarter	2.1	2.1	2.7	2.0	2.4	1.9	2.2	2.1	2.3
December Quarter	2.1	2.1	2.7	2.0	2.4	1.9	2.1	2.2	2.3
2009									
March Quarter	2.2	2.2	2.7	2.0	2.6	1.9	2.1	2.2	2.3
Year ended March 2008	2.1	2.1	2.6	2.0	2.5	1.9	1.9	2.2	2.2
Year ended March 2009	2.1	2.1	2.7	2.0	2.4	1.9	2.1	2.1	2.3
TAKINGS FROM ACCOMMODATION (\$'000)									
2008									
March Quarter	672 035	378 521	498 659	93 220	205 741	59 952	42 683	48 961	1 999 773
June Quarter	580 081	341 596	465 546	84 010	208 525	39 958	60 458	58 128	1 838 302
September Quarter	626 107	349 072	565 580	86 415	213 468	35 451	86 176	52 482	2 014 752
December Quarter	649 086	364 246	556 271	94 324	220 160	52 540	55 422	52 045	2 044 095
2009									
March Quarter	623 724	367 654	474 153	94 338	213 398	60 951	41 988	52 578	1 928 783
Year ended March 2008	2 471 138	1 369 332	2 056 295	340 943	776 923	182 702	222 004	190 787	7 610 124
Year ended March 2009	2 478 997	1 422 568	2 061 550	359 088	855 552	188 900	244 045	215 233	7 825 933
AVERAGE TAKINGS PER ROOM NIGHT OCCUPIED (\$)									
2008									
March Quarter	161.16	164.31	148.13	133.27	151.87	134.39	128.82	158.12	154.05
June Quarter	150.55	155.51	137.71	127.76	158.04	124.15	146.31	175.18	147.37
September Quarter	154.77	157.48	146.01	129.84	157.75	123.91	170.56	160.11	151.79
December Quarter	157.65	159.07	150.21	134.38	161.25	135.25	143.00	161.18	153.96
2009									
March Quarter	155.34	161.62	146.05	139.00	161.85	136.37	130.47	163.68	152.79
Year ended March 2008	153.39	154.30	142.59	124.84	144.24	127.24	138.87	147.74	146.77
Year ended March 2009	154.64	158.45	145.14	132.81	159.72	130.87	149.92	165.09	151.52
AVERAGE TAKINGS PER ROOM NIGHT AVAILABLE (\$)									
2008									
March Quarter	105.91	110.98	90.92	87.52	105.67	99.84	71.26	106.07	100.42
June Quarter	90.50	97.96	84.70	77.97	106.66	66.67	100.91	126.64	91.53
September Quarter	95.83	98.67	101.58	79.39	107.93	58.53	133.34	110.68	98.61
December Quarter	100.77	104.00	98.36	86.58	110.95	86.80	86.09	110.88	100.24
2009									
March Quarter	98.63	105.81	85.21	86.90	110.14	102.39	64.81	115.48	96.03
Year ended March 2008	97.77	99.75	94.53	80.06	99.93	76.30	91.58	104.57	95.80
Year ended March 2009	96.43	101.60	92.51	82.72	108.92	78.53	96.19	115.85	96.63

Period	New South Wales	Victoria	Queensland	South Australia	Western Australia	Tasmania	Northern Territory	Australian Capital Territory	Australia
ESTABLISHMENTS (no.)									
2008									
March Quarter	2 044	1 256	1 545	398	497	280	103	58	6 181
June Quarter	2 048	1 264	1 543	399	496	281	103	57	6 191
September Quarter	2 040	1 256	1 536	398	495	276	111	59	6 171
December Quarter	2 035	1 249	1 544	399	490	276	111	59	6 163
2009									
March Quarter	2 025	1 256	1 547	399	495	274	112	59	6 167
ROOMS (no.)									
2008									
March Quarter	76 379	42 408	64 823	13 088	22 712	7 636	np	np	238 873
June Quarter	77 088	42 923	64 663	13 231	22 808	np	6 711	np	240 130
September Quarter	77 035	42 882	64 810	13 172	22 748	7 604	7 178	5 184	240 613
December Quarter	76 959	43 035	65 586	13 216	22 762	7 611	7 166	5 151	241 486
2009									
March Quarter	77 390	43 727	66 075	13 350	22 872	7 638	np	np	243 689
BED SPACES (no.)									
2008									
March Quarter	212 317	116 642	199 557	35 636	61 722	21 479	np	np	682 458
June Quarter	214 166	118 545	199 673	35 889	61 835	np	20 126	np	686 539
September Quarter	213 886	118 039	201 233	35 896	61 850	21 271	20 869	15 221	688 265
December Quarter	213 737	118 731	203 041	36 034	61 736	21 376	20 808	15 092	690 555
2009									
March Quarter	215 731	119 336	204 716	36 383	61 803	21 310	np	np	695 287
PERSONS EMPLOYED (no.)									
2008									
March Quarter	36 636	24 547	34 441	9 039	12 216	5 514	np	np	127 915
June Quarter	36 670	24 592	34 545	9 018	12 325	np	3 137	np	128 219
September Quarter	36 674	24 432	34 574	9 135	12 138	5 440	3 335	2 601	128 329
December Quarter	35 874	24 390	33 047	8 872	11 823	5 525	3 113	2 485	125 129
2009									
March Quarter	34 556	24 369	31 966	8 829	11 581	5 621	np	np	122 727
ROOM NIGHTS OCCUPIED ('000)									
2008									
March Quarter	4 414.4	2 486.0	3 557.0	751.3	1 411.7	502.5	np	np	13 769.5
June Quarter	4 079.3	2 352.5	3 584.1	703.1	1 372.8	np	418.6	np	13 202.8
September Quarter	4 279.7	2 370.9	4 100.9	711.4	1 406.6	316.7	512.2	329.4	14 027.8
December Quarter	4 361.1	2 463.9	3 907.9	753.9	1 419.1	433.0	393.0	324.6	14 056.5
2009									
March Quarter	4 255.7	2 444.2	3 425.5	727.5	1 368.8	502.5	np	np	13 372.3
ROOM OCCUPANCY RATE (%)									
2008									
March Quarter	64.0	65.2	60.6	63.1	68.5	72.6	np	np	63.8
June Quarter	58.7	60.5	60.9	58.5	66.4	np	68.6	np	60.7
September Quarter	60.4	60.1	68.9	58.8	67.3	45.3	77.6	69.1	63.4
December Quarter	62.5	63.1	64.8	62.1	67.8	61.9	59.8	68.7	63.8
2009									
March Quarter	62.2	63.5	57.8	60.6	66.9	73.2	np	np	61.7

np not available for publication but included in totals where applicable, unless otherwise indicated

<i>Period</i>	<i>New South Wales</i>	<i>Victoria</i>	<i>Queensland</i>	<i>South Australia</i>	<i>Western Australia</i>	<i>Tasmania</i>	<i>Northern Territory</i>	<i>Australian Capital Territory</i>	<i>Australia</i>
GUEST NIGHTS OCCUPIED ('000)									
2008									
March Quarter	7 775.0	4 266.2	6 992.9	1 225.3	2 388.3	974.4	np	np	24 680.2
June Quarter	6 710.9	3 813.0	6 546.3	1 092.3	2 176.4	np	692.9	np	22 186.8
September Quarter	7 371.7	3 997.2	7 829.5	1 123.5	2 263.2	563.8	863.4	544.0	24 556.4
December Quarter	7 592.1	4 146.3	7 599.6	1 222.2	2 367.7	798.2	642.4	537.8	24 906.4
2009									
March Quarter	7 540.8	4 202.3	6 665.4	1 203.4	2 305.9	964.7	np	np	23 917.5
BED OCCUPANCY RATE (%)									
2008									
March Quarter	40.6	40.9	38.7	37.8	42.7	50.0	np	np	40.1
June Quarter	34.8	35.5	36.0	33.5	38.8	np	37.9	np	35.7
September Quarter	37.5	36.8	42.4	34.0	39.9	28.9	45.0	38.8	38.8
December Quarter	39.3	38.8	40.7	36.9	41.7	40.6	33.7	38.9	39.6
2009									
March Quarter	39.8	40.4	36.3	36.8	41.8	50.4	np	np	38.8
GUEST ARRIVALS ('000)									
2008									
March Quarter	3 612.0	1 997.7	2 599.2	600.2	923.9	532.0	np	np	10 776.2
June Quarter	3 369.6	1 904.3	2 597.7	556.4	907.9	np	312.2	np	10 239.5
September Quarter	3 616.9	1 925.8	2 963.6	579.3	949.2	295.5	399.7	262.9	10 992.8
December Quarter	3 698.6	2 041.5	2 857.9	622.2	972.4	423.5	310.8	245.6	11 172.6
2009									
March Quarter	3 525.8	1 959.6	2 474.6	593.6	904.7	502.9	np	np	10 454.2
AVERAGE LENGTH OF STAY (days)									
2008									
March Quarter	2.2	2.1	2.7	2.0	2.6	1.8	np	np	2.3
June Quarter	2.0	2.0	2.5	2.0	2.4	np	2.2	np	2.2
September Quarter	2.0	2.1	2.6	1.9	2.4	1.9	2.2	2.1	2.2
December Quarter	2.1	2.0	2.7	2.0	2.4	1.9	2.1	2.2	2.2
2009									
March Quarter	2.1	2.1	2.7	2.0	2.5	1.9	np	np	2.3
TAKINGS FROM ACCOMMODATION (\$'000)									
2008									
March Quarter	696 461	397 454	516 273	97 724	213 363	66 778	np	np	2 080 180
June Quarter	600 979	356 631	484 062	87 855	215 225	np	61 012	np	1 908 216
September Quarter	650 337	364 612	587 117	90 212	220 524	38 786	87 420	52 599	2 091 606
December Quarter	673 375	382 404	575 928	98 859	227 769	57 815	56 385	52 168	2 124 705
2009									
March Quarter	649 046	385 384	491 364	98 665	220 640	67 864	np	np	2 008 410
AVERAGE TAKINGS PER ROOM NIGHT OCCUPIED (\$)									
2008									
March Quarter	157.77	159.88	145.14	130.08	151.14	132.90	np	np	151.07
June Quarter	147.32	151.60	135.06	124.95	156.78	np	145.75	np	144.53
September Quarter	151.96	153.78	143.17	126.81	156.77	122.48	170.67	159.69	149.10
December Quarter	154.41	155.20	147.38	131.13	160.50	133.51	143.47	160.73	151.15
2009									
March Quarter	152.51	157.67	143.44	135.63	161.20	135.06	np	np	150.19

np not available for publication but included in totals where applicable, unless otherwise indicated

<i>Period</i>	<i>New South Wales</i>	<i>Victoria</i>	<i>Queensland</i>	<i>South Australia</i>	<i>Western Australia</i>	<i>Tasmania</i>	<i>Northern Territory</i>	<i>Australian Capital Territory</i>	<i>Australia</i>
AVERAGE TAKINGS PER ROOM NIGHT AVAILABLE (\$)									
2008									
March Quarter	100.96	104.26	87.96	82.08	103.60	96.50	np	np	96.32
June Quarter	86.42	91.67	82.30	73.09	104.08	np	100.01	np	87.69
September Quarter	91.82	92.49	98.67	74.51	105.56	55.53	132.38	110.29	94.60
December Quarter	96.49	97.98	95.55	81.47	108.89	82.65	85.73	110.49	96.39
2009									
March Quarter	94.81	100.08	82.94	82.25	107.86	98.85	np	np	92.68

np not available for publication but included in totals where applicable, unless otherwise indicated

<i>Period</i>	<i>New South Wales</i>	<i>Victoria</i>	<i>Queensland</i>	<i>South Australia</i>	<i>Western Australia</i>	<i>Tasmania</i>	<i>Northern Territory</i>	<i>Australian Capital Territory</i>	<i>Australia</i>
ESTABLISHMENTS (no.)									
2008									
March Quarter	436	356	254	135	171	46	48	3	1 449
June Quarter	437	354	255	134	171	46	49	3	1 449
September Quarter	432	353	255	134	170	45	51	3	1 443
December Quarter	433	354	254	134	171	46	50	3	1 445
2009									
March Quarter	434	351	253	135	172	45	49	3	1 442
ON-SITE VANS (no.)									
2008									
March Quarter	7 182	2 692	1 626	400	1 376	np	np	58	13 647
June Quarter	7 330	2 437	1 691	415	1 480	np	np	58	13 762
September Quarter	6 920	2 719	1 701	499	1 538	np	np	59	13 870
December Quarter	6 976	2 503	1 631	396	1 351	np	np	np	13 235
2009									
March Quarter	6 777	2 709	1 625	458	1 362	np	np	np	13 244
OTHER POWERED SITES (no.)									
2008									
March Quarter	39 256	33 164	18 972	11 578	14 760	np	np	373	125 263
June Quarter	39 158	33 019	18 880	11 484	14 770	np	np	373	124 866
September Quarter	38 329	32 770	18 778	11 085	14 814	np	np	373	123 196
December Quarter	38 985	32 956	18 821	11 231	14 888	np	np	np	124 486
2009									
March Quarter	39 508	32 714	18 794	11 271	14 782	np	np	np	124 487
UNPOWERED SITES (no.)									
2008									
March Quarter	11 054	9 669	5 581	4 202	3 286	np	np	400	38 703
June Quarter	11 115	9 531	5 361	4 140	3 272	np	np	400	38 322
September Quarter	10 904	9 496	5 460	4 208	3 234	np	np	400	38 117
December Quarter	10 951	9 055	5 376	4 175	3 237	np	np	np	37 754
2009									
March Quarter	10 906	9 086	5 280	4 008	3 376	np	np	np	37 513
CABINS FLATS, UNITS AND VILLAS (no.)									
2008									
March Quarter	10 006	5 214	4 565	2 451	2 783	np	np	105	26 812
June Quarter	9 920	5 499	4 579	2 474	2 773	np	np	105	27 079
September Quarter	10 334	5 445	4 868	2 498	2 809	np	np	96	27 865
December Quarter	10 310	5 618	4 794	2 525	3 118	np	np	np	28 138
2009									
March Quarter	10 165	5 485	4 738	2 537	3 102	np	np	np	27 828
TOTAL CAPACITY (no.)									
2008									
March Quarter	67 498	50 739	30 744	18 631	22 205	np	np	936	204 425
June Quarter	67 523	50 486	30 511	18 513	22 295	np	np	936	204 029
September Quarter	66 487	50 430	30 807	18 290	22 395	np	np	928	203 048
December Quarter	67 222	50 132	30 622	18 327	22 594	np	np	np	203 613
2009									
March Quarter	67 356	49 994	30 437	18 274	22 622	np	np	np	203 072

np not available for publication but included in totals where applicable, unless otherwise indicated

(a) Comprising establishments with 40 or more powered sites and cabins, flats, units and villas.

Period	New South Wales	Victoria	Queensland	South Australia	Western Australia	Tasmania	Northern Territory	Australian Capital Territory	Australia
--------	-----------------	----------	------------	-----------------	-------------------	----------	--------------------	------------------------------	-----------

PERSONS EMPLOYED (no.)

2008									
March Quarter	2 910	1 754	1 444	826	1 228	np	np	84	9 051
June Quarter	2 759	1 688	1 496	733	1 251	np	np	80	8 857
September Quarter	2 822	1 724	1 524	797	1 254	np	np	92	9 110
December Quarter	3 048	1 855	1 503	814	1 241	np	np	np	9 357
2009									
March Quarter	2 995	1 811	1 498	804	1 224	np	np	np	9 174

SITES OCCUPIED BY LONG-TERM GUESTS (no.)

2008									
March Quarter	5 877	2 614	4 687	983	3 330	np	np	155	18 382
June Quarter	5 755	2 777	4 895	921	3 325	np	np	155	18 623
September Quarter	5 951	2 844	5 171	919	3 339	np	np	154	19 178
December Quarter	6 416	2 988	4 993	948	3 139	np	np	np	19 360
2009									
March Quarter	6 166	2 891	4 871	991	3 295	np	np	np	19 120

OTHER SITES PERMANENTLY RESERVED (no.)

2008									
March Quarter	19 230	15 313	915	2 120	1 651	np	np	5	40 152
June Quarter	18 764	14 435	858	2 118	1 565	np	np	5	38 686
September Quarter	18 746	14 011	1 049	2 340	1 659	np	np	—	38 679
December Quarter	18 531	14 431	1 003	2 248	1 710	np	np	np	38 850
2009									
March Quarter	18 529	14 105	973	2 315	1 911	np	np	np	38 689

SITE NIGHTS OCCUPIED ('000)

2008									
March Quarter	3 735.1	2 578.6	1 127.6	754.1	948.0	np	np	31.4	9 535.8
June Quarter	3 226.9	2 044.0	1 423.4	620.7	978.5	np	np	28.4	8 757.8
September Quarter	3 262.2	1 972.9	1 801.3	565.2	1 094.4	np	np	27.5	9 242.7
December Quarter	3 609.8	2 249.8	1 334.1	662.1	922.8	np	np	np	9 165.9
2009									
March Quarter	3 711.8	2 446.1	1 149.9	756.7	952.5	np	np	np	9 410.7

SITE OCCUPANCY RATE (%)

2008									
March Quarter	60.8	55.9	40.3	44.5	47.0	np	np	36.9	51.3
June Quarter	52.5	45.4	51.3	36.8	48.2	np	np	33.3	47.4
September Quarter	53.3	43.1	63.6	33.6	53.2	np	np	32.2	49.7
December Quarter	58.4	50.0	47.4	39.3	44.4	np	np	np	49.3
2009									
March Quarter	61.2	54.6	42.1	46.0	46.8	np	np	np	51.6

— nil or rounded to zero (including null cells)

np not available for publication but included in totals where applicable, unless otherwise indicated

(a) Comprising establishments with 40 or more powered sites and cabins, flats, units and villas.

<i>Period</i>	<i>New South Wales</i>	<i>Victoria</i>	<i>Queensland</i>	<i>South Australia</i>	<i>Western Australia</i>	<i>Tasmania</i>	<i>Northern Territory</i>	<i>Australian Capital Territory</i>	<i>Australia</i>
TAKINGS FROM ACCOMMODATION (\$'000)									
2008									
March Quarter	90 350	49 413	32 862	20 123	28 772	np	np	1 123	234 706
June Quarter	58 681	28 063	41 874	15 283	29 607	np	np	1 063	188 520
September Quarter	62 087	32 491	55 194	13 273	31 666	np	np	1 263	212 042
December Quarter	84 895	41 441	42 508	18 073	28 050	np	np	np	227 550
2009									
March Quarter	92 374	47 720	34 622	21 133	30 685	np	np	np	240 294

np not available for publication but included in totals where applicable, unless otherwise indicated

(a) Comprising establishments with 40 or more powered sites and cabins, flats, units and villas.

<i>Period</i>	<i>New South Wales</i>	<i>Victoria</i>	<i>Queensland</i>	<i>South Australia</i>	<i>Western Australia</i>	<i>Tasmania</i>	<i>Northern Territory</i>	<i>Australian Capital Territory</i>	<i>Australia</i>
ESTABLISHMENTS (no.)									
2008									
March Quarter	74	43	70	8	26	1	2	—	224
June Quarter	75	43	71	8	26	1	2	—	226
September Quarter	74	43	70	8	26	1	2	—	224
December Quarter	73	43	70	8	26	1	2	—	223
2009									
March Quarter	72	42	70	8	26	1	2	—	221
ON-SITE VANS (no.)									
2008									
March Quarter	1 204	651	1 944	107	370	np	np	—	4 285
June Quarter	1 181	605	1 832	90	364	np	np	—	4 081
September Quarter	1 190	601	1 923	96	364	np	np	—	4 183
December Quarter	1 166	588	1 767	83	364	np	np	—	3 977
2009									
March Quarter	1 074	574	1 781	83	357	np	np	—	3 878
OTHER POWERED SITES (no.)									
2008									
March Quarter	5 342	3 400	4 734	751	2 063	np	np	—	16 540
June Quarter	5 432	3 440	4 893	763	2 084	np	np	—	16 862
September Quarter	5 096	3 289	4 592	758	2 073	np	np	—	16 067
December Quarter	4 873	3 483	4 832	594	2 082	np	np	—	16 123
2009									
March Quarter	4 896	3 449	4 867	594	1 938	np	np	—	16 003
UNPOWERED SITES (no.)									
2008									
March Quarter	775	357	506	94	157	np	np	—	1 967
June Quarter	735	356	453	68	152	np	np	—	1 832
September Quarter	772	344	460	77	155	np	np	—	1 907
December Quarter	732	343	458	68	145	np	np	—	1 845
2009									
March Quarter	652	383	466	69	133	np	np	—	1 802
CABINS FLATS, UNITS AND VILLAS (no.)									
2008									
March Quarter	2 345	1 452	1 795	277	690	np	np	—	6 606
June Quarter	2 383	1 460	1 823	281	689	np	np	—	6 677
September Quarter	2 438	1 606	1 845	282	696	np	np	—	6 908
December Quarter	2 690	1 648	1 918	477	694	np	np	—	7 468
2009									
March Quarter	2 680	1 433	1 909	477	689	np	np	—	7 229

— nil or rounded to zero (including null cells)

np not available for publication but included in totals where applicable, unless otherwise indicated

(a) Comprising establishments with 40 or more powered sites and cabins, flats, units and villas.

<i>Period</i>	<i>New South Wales</i>	<i>Victoria</i>	<i>Queensland</i>	<i>South Australia</i>	<i>Western Australia</i>	<i>Tasmania</i>	<i>Northern Territory</i>	<i>Australian Capital Territory</i>	<i>Australia</i>
TOTAL CAPACITY (no.)									
2008									
March Quarter	9 666	5 860	8 979	1 229	3 280	np	np	—	29 398
June Quarter	9 731	5 861	9 001	1 202	3 289	np	np	—	29 452
September Quarter	9 496	5 840	8 820	1 213	3 288	np	np	—	29 065
December Quarter	9 461	6 062	8 975	1 222	3 285	np	np	—	29 413
2009									
March Quarter	9 302	5 839	9 023	1 223	3 117	np	np	—	28 912
PERSONS EMPLOYED (no.)									
2008									
March Quarter	434	248	428	54	160	np	np	—	1 335
June Quarter	439	244	429	55	162	np	np	—	1 342
September Quarter	435	241	483	55	157	np	np	—	1 385
December Quarter	458	241	446	56	162	np	np	—	1 377
2009									
March Quarter	438	235	491	52	167	np	np	—	1 398
SITES OCCUPIED BY LONG-TERM GUESTS (no.)									
2008									
March Quarter	4 718	3 008	5 955	618	2 044	np	np	—	16 403
June Quarter	4 862	2 710	5 703	614	1 974	np	np	—	15 934
September Quarter	4 690	2 633	5 642	616	1 885	np	np	—	15 514
December Quarter	4 602	2 768	5 637	627	2 009	np	np	—	15 691
2009									
March Quarter	4 556	2 555	5 728	653	1 896	np	np	—	15 433
OTHER SITES PERMANENTLY RESERVED (no.)									
2008									
March Quarter	993	324	227	43	30	np	np	—	1 681
June Quarter	924	692	377	18	30	np	np	—	2 105
September Quarter	898	716	305	1	30	np	np	—	2 014
December Quarter	934	674	267	11	87	np	np	—	2 037
2009									
March Quarter	916	741	109	11	65	np	np	—	1 909
SITE NIGHTS OCCUPIED ('000)									
2008									
March Quarter	678.7	418.0	655.6	81.9	237.1	np	np	—	2 091.3
June Quarter	645.9	376.2	671.8	79.1	246.0	np	np	—	2 038.4
September Quarter	645.4	361.2	681.8	71.2	252.2	np	np	—	2 025.4
December Quarter	675.9	398.7	656.7	81.4	252.7	np	np	—	2 080.4
2009									
March Quarter	644.6	404.6	614.1	78.4	233.5	np	np	—	1 991.2

— nil or rounded to zero (including null cells)

np not available for publication but included in totals where applicable, unless otherwise indicated

(a) Comprising establishments with 40 or more powered sites and cabins, flats, units and villas.

<i>Period</i>	<i>New South Wales</i>	<i>Victoria</i>	<i>Queensland</i>	<i>South Australia</i>	<i>Western Australia</i>	<i>Tasmania</i>	<i>Northern Territory</i>	<i>Australian Capital Territory</i>	<i>Australia</i>
---------------	------------------------	-----------------	-------------------	------------------------	--------------------------	-----------------	---------------------------	-------------------------------------	------------------

SITE OCCUPANCY RATE (%)

2008									
March Quarter	77.2	78.5	80.3	73.2	79.4	np	np	—	78.2
June Quarter	72.9	70.5	82.0	72.3	82.2	np	np	—	76.1
September Quarter	73.9	67.2	84.0	63.8	83.4	np	np	—	75.8
December Quarter	77.7	71.5	79.5	72.4	84.4	np	np	—	77.0
2009									
March Quarter	77.0	77.0	75.6	71.2	83.2	np	np	—	76.5

TAKINGS FROM ACCOMMODATION (\$'000)

2008									
March Quarter	14 241	7 583	13 901	1 666	6 439	np	np	—	44 316
June Quarter	11 713	6 151	13 885	2 094	6 453	np	np	—	40 737
September Quarter	12 218	7 089	14 823	1 958	6 343	np	np	—	42 903
December Quarter	15 013	6 839	14 831	2 143	6 445	np	np	—	45 647
2009									
March Quarter	14 168	7 078	13 655	2 106	7 069	np	np	—	44 528

— nil or rounded to zero (including null cells)

np not available for publication but included in totals where applicable, unless otherwise indicated

(a) Comprising establishments with 40 or more powered sites and cabins, flats, units and villas.

Period	New South Wales	Victoria	Queensland	South Australia	Western Australia	Tasmania	Northern Territory	Australian Capital Territory	Australia
ESTABLISHMENTS (no.)									
2008									
March Quarter	510	399	324	143	197	47	50	3	1 673
June Quarter	512	397	326	142	197	47	51	3	1 675
September Quarter	506	396	325	142	196	46	53	3	1 667
December Quarter	506	397	324	142	197	47	52	3	1 668
2009									
March Quarter	506	393	323	143	198	46	51	3	1 663
ON-SITE VANS (no.)									
2008									
March Quarter	8 386	3 343	3 570	507	1 746	231	91	58	17 932
June Quarter	8 511	3 042	3 523	505	1 844	271	89	58	17 843
September Quarter	8 110	3 320	3 624	595	1 902	269	174	59	18 053
December Quarter	8 142	3 091	3 398	479	1 715	np	84	np	17 212
2009									
March Quarter	7 851	3 283	3 406	541	1 719	169	np	np	17 122
OTHER POWERED SITES (no.)									
2008									
March Quarter	44 598	36 564	23 706	12 329	16 823	2 869	4 541	373	141 803
June Quarter	44 590	36 459	23 773	12 247	16 854	2 829	4 603	373	141 728
September Quarter	43 425	36 059	23 370	11 843	16 887	2 807	4 499	373	139 263
December Quarter	43 858	36 439	23 653	11 825	16 970	np	4 625	np	140 609
2009									
March Quarter	44 404	36 163	23 661	11 865	16 720	2 886	np	np	140 490
UNPOWERED SITES (no.)									
2008									
March Quarter	11 829	10 026	6 087	4 296	3 443	1 691	2 898	400	40 670
June Quarter	11 850	9 887	5 814	4 208	3 424	1 612	2 959	400	40 154
September Quarter	11 676	9 840	5 920	4 285	3 389	1 685	2 829	400	40 024
December Quarter	11 683	9 398	5 834	4 243	3 382	np	2 962	np	39 599
2009									
March Quarter	11 558	9 469	5 746	4 077	3 509	1 673	np	np	39 315
CABINS FLATS, UNITS AND VILLAS (no.)									
2008									
March Quarter	12 351	6 666	6 360	2 728	3 473	679	1 056	105	33 418
June Quarter	12 303	6 959	6 402	2 755	3 462	702	1 068	105	33 756
September Quarter	12 772	7 051	6 713	2 780	3 505	646	1 210	96	34 773
December Quarter	13 000	7 266	6 712	3 002	3 812	np	1 063	np	35 606
2009									
March Quarter	12 845	6 918	6 647	3 014	3 791	652	np	np	35 057

np not available for publication but included in totals where applicable, unless otherwise indicated

(a) Comprising establishments with 40 or more powered sites and cabins, flats, units and villas.

<i>Period</i>	<i>New South Wales</i>	<i>Victoria</i>	<i>Queensland</i>	<i>South Australia</i>	<i>Western Australia</i>	<i>Tasmania</i>	<i>Northern Territory</i>	<i>Australian Capital Territory</i>	<i>Australia</i>
TOTAL CAPACITY (no.)									
2008									
March Quarter	77 164	56 599	39 723	19 860	25 485	5 470	8 586	936	233 823
June Quarter	77 254	56 347	39 512	19 715	25 584	5 414	8 719	936	233 481
September Quarter	75 983	56 270	39 627	19 503	25 683	5 407	8 712	928	232 113
December Quarter	76 683	56 194	39 597	19 549	25 879	np	8 734	np	233 026
2009									
March Quarter	76 658	55 833	39 460	19 497	25 739	5 380	np	np	231 984
PERSONS EMPLOYED (no.)									
2008									
March Quarter	3 344	2 002	1 872	880	1 388	305	511	84	10 386
June Quarter	3 198	1 932	1 925	788	1 413	259	604	80	10 199
September Quarter	3 257	1 965	2 007	852	1 411	264	647	92	10 495
December Quarter	3 506	2 096	1 949	870	1 403	np	526	np	10 734
2009									
March Quarter	3 433	2 046	1 989	856	1 391	278	np	np	10 572
SITES OCCUPIED BY LONG-TERM GUESTS (no.)									
2008									
March Quarter	10 595	5 622	10 642	1 601	5 374	315	481	155	34 785
June Quarter	10 617	5 487	10 598	1 535	5 299	271	595	155	34 557
September Quarter	10 641	5 477	10 813	1 535	5 224	327	521	154	34 692
December Quarter	11 018	5 756	10 630	1 575	5 148	np	477	np	35 051
2009									
March Quarter	10 722	5 446	10 599	1 644	5 191	306	np	np	34 553
OTHER SITES PERMANENTLY RESERVED (no.)									
2008									
March Quarter	20 223	15 637	1 142	2 163	1 681	965	17	5	41 833
June Quarter	19 688	15 127	1 235	2 136	1 595	990	15	5	40 791
September Quarter	19 644	14 727	1 354	2 341	1 689	938	—	—	40 693
December Quarter	19 465	15 105	1 270	2 259	1 797	np	21	np	40 887
2009									
March Quarter	19 445	14 846	1 082	2 326	1 976	895	np	np	40 598
SITE NIGHTS OCCUPIED ('000)									
2008									
March Quarter	4 413.8	2 996.7	1 783.3	835.9	1 185.1	263.9	117.1	31.4	11 627.1
June Quarter	3 872.8	2 420.2	2 095.2	699.8	1 224.5	172.2	283.1	28.4	10 796.2
September Quarter	3 907.6	2 334.1	2 483.2	636.4	1 346.7	157.9	374.8	27.5	11 268.1
December Quarter	4 285.7	2 648.5	1 990.8	743.5	1 175.5	np	164.7	np	11 246.3
2009									
March Quarter	4 356.4	2 850.6	1 764.0	835.1	1 186.0	249.8	np	np	11 402.0

— nil or rounded to zero (including null cells)

np not available for publication but included in totals where applicable, unless otherwise indicated

(a) Comprising establishments with 40 or more powered sites and cabins, flats, units and villas.

<i>Period</i>	<i>New South Wales</i>	<i>Victoria</i>	<i>Queensland</i>	<i>South Australia</i>	<i>Western Australia</i>	<i>Tasmania</i>	<i>Northern Territory</i>	<i>Australian Capital Territory</i>	<i>Australia</i>
---------------	------------------------	-----------------	-------------------	------------------------	--------------------------	-----------------	---------------------------	-------------------------------------	------------------

SITE OCCUPANCY RATE (%)

2008									
March Quarter	62.9	58.2	49.4	46.3	51.2	53.1	15.1	36.9	54.7
June Quarter	55.1	48.1	58.3	39.0	52.6	35.6	35.7	33.3	51.1
September Quarter	55.9	45.6	68.1	35.5	57.1	32.8	46.8	32.2	53.0
December Quarter	60.7	52.4	54.7	41.3	49.4	np	20.8	np	52.8
2009									
March Quarter	63.1	56.9	49.8	47.6	51.2	52.5	np	np	54.7

TAKINGS FROM ACCOMMODATION (\$'000)

2008									
March Quarter	104 591	56 996	46 763	21 789	35 211	7 795	4 754	1 123	279 021
June Quarter	70 394	34 214	55 759	17 377	36 060	3 493	10 897	1 063	229 256
September Quarter	74 305	39 580	70 017	15 232	38 009	3 078	13 462	1 263	254 945
December Quarter	99 908	48 280	57 339	20 216	34 495	np	6 258	np	273 197
2009									
March Quarter	106 542	54 798	48 278	23 240	37 754	7 863	np	np	284 822

np not available for publication but included in totals where applicable, unless otherwise indicated

(a) Comprising establishments with 40 or more powered sites and cabins, flats, units and villas.

	New South Wales	Victoria	Queensland	South Australia	Western Australia	Tasmania	Northern Territory	Australian Capital Territory	Australia
LETTING ENTITIES (a) (no.)									
2008									
March Quarter	94	15	34	8	2	2	—	—	155
June Quarter	97	15	33	9	2	2	—	—	158
September Quarter	98	13	33	9	2	2	1	—	158
December Quarter	98	13	32	9	2	2	1	—	157
2009									
March Quarter	98	13	32	9	2	2	1	—	157
SINGLE BEDROOM HOLIDAY FLATS, UNITS AND HOUSES (no.)									
2008									
March Quarter	386	95	160	9	np	np	—	—	653
June Quarter	353	55	151	9	np	np	—	—	571
September Quarter	359	72	153	11	np	np	np	—	609
December Quarter	425	69	149	6	np	np	np	—	664
2009									
March Quarter	423	110	182	6	np	np	np	—	736
MULTIPLE BEDROOM HOLIDAY FLATS, UNITS AND HOUSES (no.)									
2008									
March Quarter	7 653	1 703	2 780	719	np	np	—	—	13 070
June Quarter	7 533	1 699	2 774	732	np	np	—	—	12 954
September Quarter	7 466	1 817	2 796	706	np	np	np	—	13 004
December Quarter	7 538	1 926	2 924	690	np	np	np	—	13 298
2009									
March Quarter	7 576	2 007	2 847	694	np	np	np	—	13 346
TOTAL HOLIDAY FLATS, UNITS AND HOUSES (no.)									
2008									
March Quarter	8 039	1 798	2 940	728	np	np	—	—	13 723
June Quarter	7 886	1 754	2 925	741	np	np	—	—	13 525
September Quarter	7 825	1 889	2 949	717	np	np	np	—	13 613
December Quarter	7 963	1 995	3 073	696	np	np	np	—	13 962
2009									
March Quarter	7 999	2 117	3 029	700	np	np	np	—	14 082
BED SPACES (no.)									
2008									
March Quarter	44 080	11 544	14 268	5 647	np	np	—	—	76 903
June Quarter	42 920	12 229	14 352	5 324	np	np	—	—	76 139
September Quarter	42 758	11 912	14 158	5 168	np	np	np	—	75 318
December Quarter	42 981	11 897	14 626	5 046	np	np	np	—	75 924
2009									
March Quarter	44 262	12 744	14 561	5 044	np	np	np	—	77 959

— nil or rounded to zero (including null cells)

np not available for publication but included in totals where applicable, unless otherwise indicated

(a) The number of managers, owners or real estate agents with 15 or more self-contained units.

	New South Wales	Victoria	Queensland	South Australia	Western Australia	Tasmania	Northern Territory	Australian Capital Territory	Australia
UNIT NIGHTS OCCUPIED ('000)									
2008									
March Quarter	282.3	18.8	136.5	19.5	np	np	—	—	466.0
June Quarter	145.9	7.9	112.4	8.4	np	np	—	—	281.2
September Quarter	163.2	12.2	142.5	7.2	np	np	np	—	332.8
December Quarter	212.6	19.5	154.6	12.5	np	np	np	—	406.7
2009									
March Quarter	262.8	26.9	137.5	20.8	np	np	np	—	458.5
UNIT OCCUPANCY RATE (%)									
2008									
March Quarter	38.6	11.5	51.1	29.5	np	np	—	—	37.4
June Quarter	20.3	5.0	42.2	12.5	np	np	—	—	22.9
September Quarter	22.7	7.0	52.5	10.9	np	np	np	—	26.6
December Quarter	29.0	10.6	54.7	19.6	np	np	np	—	31.7
2009									
March Quarter	36.5	14.2	50.5	33.0	np	np	np	—	36.2
UNIT LETTINGS ('000)									
2008									
March Quarter	42.7	4.3	26.5	8.7	np	np	—	—	83.6
June Quarter	24.0	2.3	21.3	4.7	np	np	—	—	53.2
September Quarter	23.7	2.7	22.9	3.8	np	np	np	—	54.2
December Quarter	34.3	5.0	35.8	6.2	np	np	np	—	82.6
2009									
March Quarter	36.0	5.0	29.2	9.1	np	np	np	—	81.1
AVERAGE LENGTH OF STAY (days)									
2008									
March Quarter	6.6	4.4	5.2	2.2	np	np	—	—	5.6
June Quarter	6.1	3.4	5.3	1.8	np	np	—	—	5.3
September Quarter	6.9	4.4	6.2	1.9	np	np	np	—	6.1
December Quarter	6.2	3.9	4.3	2.0	np	np	np	—	4.9
2009									
March Quarter	7.3	5.4	4.7	2.3	np	np	np	—	5.7
TAKINGS FROM ACCOMMODATION (\$'000)									
2008									
March Quarter	34 050	2 351	15 084	2 516	np	np	—	—	54 909
June Quarter	11 951	778	10 623	698	np	np	—	—	24 683
September Quarter	16 326	2 226	14 094	566	np	np	np	—	33 983
December Quarter	26 862	3 249	18 291	1 335	np	np	np	—	50 726
2009									
March Quarter	31 765	5 055	14 496	2 636	np	np	np	—	55 063

— nil or rounded to zero (including null cells)

np not available for publication but included in totals where applicable, unless otherwise indicated

	New South Wales	Victoria	Queensland	South Australia	Western Australia	Tasmania	Northern Territory	Australian Capital Territory	Australia
LETTING ENTITIES (a) (no.)									
2008									
March Quarter	58	19	313	7	19	7	2	3	428
June Quarter	59	21	314	7	18	6	2	3	430
September Quarter	58	21	312	7	19	6	2	3	428
December Quarter	59	21	314	7	20	7	2	3	433
2009									
March Quarter	59	20	315	7	20	6	2	3	432
SINGLE BEDROOM HOLIDAY FLATS, UNITS AND HOUSES (no.)									
2008									
March Quarter	428	312	2 975	98	np	np	np	np	4 312
June Quarter	443	311	3 021	100	np	np	np	np	4 361
September Quarter	441	311	2 839	100	np	np	np	np	4 189
December Quarter	434	268	2 888	91	np	np	np	np	4 190
2009									
March Quarter	416	299	3 054	97	np	np	np	np	4 366
MULTIPLE BEDROOM HOLIDAY FLATS, UNITS AND HOUSES (no.)									
2008									
March Quarter	1 178	591	7 970	140	np	np	np	np	10 863
June Quarter	1 192	769	7 842	142	np	np	np	np	10 889
September Quarter	1 213	774	7 789	141	np	np	np	np	10 887
December Quarter	1 222	844	7 825	136	np	np	np	np	11 022
2009									
March Quarter	1 238	763	7 750	135	np	np	np	np	10 876
TOTAL HOLIDAY FLATS, UNITS AND HOUSES (no.)									
2008									
March Quarter	1 606	903	10 945	238	np	np	np	np	15 175
June Quarter	1 635	1 080	10 863	242	np	np	np	np	15 250
September Quarter	1 654	1 085	10 628	241	np	np	np	np	15 076
December Quarter	1 656	1 112	10 713	227	np	np	np	np	15 212
2009									
March Quarter	1 654	1 062	10 804	232	np	np	np	np	15 242
BED SPACES (no.)									
2008									
March Quarter	7 091	3 806	43 179	989	np	np	np	np	62 556
June Quarter	7 118	4 402	42 916	1 009	np	np	np	np	62 385
September Quarter	7 204	4 408	41 927	1 015	np	np	np	np	61 672
December Quarter	6 965	4 733	41 852	984	np	np	np	np	61 850
2009									
March Quarter	7 176	5 119	42 185	993	np	np	np	np	62 748

np not available for publication but included in totals where applicable, unless otherwise indicated

(a) The number of owners, managers or real estate agents with 15 or more self-contained units.

	New South Wales	Victoria	Queensland	South Australia	Western Australia	Tasmania	Northern Territory	Australian Capital Territory	Australia
PERSONS EMPLOYED (no.)									
2008									
March Quarter	506	227	1 253	59	np	np	np	np	2 450
June Quarter	526	260	1 230	59	np	np	np	np	2 470
September Quarter	509	277	1 275	60	np	np	np	np	2 526
December Quarter	556	255	1 357	61	np	np	np	np	2 648
2009									
March Quarter	538	237	1 398	44	np	np	np	np	2 665
UNIT NIGHTS OCCUPIED ('000)									
2008									
March Quarter	88.9	50.2	632.7	15.5	np	np	np	np	894.1
June Quarter	68.5	47.1	529.2	13.2	np	np	np	np	747.3
September Quarter	75.2	51.8	664.1	13.2	np	np	np	np	889.7
December Quarter	91.8	47.9	640.0	15.4	np	np	np	np	898.9
2009									
March Quarter	92.7	47.7	586.8	15.4	np	np	np	np	846.8
UNIT OCCUPANCY RATE (%)									
2008									
March Quarter	60.9	61.2	63.5	71.4	np	np	np	np	64.8
June Quarter	46.2	47.9	53.5	59.7	np	np	np	np	53.9
September Quarter	49.7	51.9	67.9	59.5	np	np	np	np	64.2
December Quarter	60.2	50.9	64.9	73.5	np	np	np	np	64.6
2009									
March Quarter	62.3	53.7	60.3	73.5	np	np	np	np	62.0
UNIT LETTINGS ('000)									
2008									
March Quarter	31.9	10.5	237.1	4.0	np	np	np	np	320.8
June Quarter	29.3	10.4	210.4	3.9	np	np	np	np	290.2
September Quarter	28.4	10.3	231.5	4.5	np	np	np	np	305.5
December Quarter	36.4	10.8	259.2	4.8	np	np	np	np	351.8
2009									
March Quarter	36.9	10.5	230.7	4.4	np	np	np	np	320.7
AVERAGE LENGTH OF STAY (days)									
2008									
March Quarter	2.8	4.8	2.7	3.8	np	np	np	np	2.8
June Quarter	2.3	4.5	2.5	3.3	np	np	np	np	2.6
September Quarter	2.6	5.0	2.9	2.9	np	np	np	np	2.9
December Quarter	2.5	4.4	2.5	3.2	np	np	np	np	2.6
2009									
March Quarter	2.5	4.5	2.5	3.5	np	np	np	np	2.6
TAKINGS FROM ACCOMMODATION (\$'000)									
2008									
March Quarter	13 600	7 356	84 717	2 007	np	np	np	np	121 825
June Quarter	8 731	6 273	63 339	1 360	np	np	np	np	90 473
September Quarter	11 963	8 363	85 305	1 534	np	np	np	np	117 233
December Quarter	14 202	6 797	92 244	1 949	np	np	np	np	129 322
2009									
March Quarter	14 939	7 352	80 788	1 892	np	np	np	np	119 791

np not available for publication but included in totals where applicable, unless otherwise indicated

	New South Wales	Victoria	Queensland	South Australia	Western Australia	Tasmania	Northern Territory	Australian Capital Territory	Australia
LETTING ENTITIES (a) (no.)									
2008									
March Quarter	152	34	347	15	21	9	2	3	583
June Quarter	156	36	347	16	20	8	2	3	588
September Quarter	156	34	345	16	21	8	3	3	586
December Quarter	157	34	346	16	22	9	3	3	590
2009									
March Quarter	157	33	347	16	22	8	3	3	589
SINGLE BEDROOM HOLIDAY FLATS, UNITS AND HOUSES (no.)									
2008									
March Quarter	814	407	3 135	107	365	48	np	np	4 965
June Quarter	796	366	3 172	109	359	41	np	np	4 932
September Quarter	800	383	2 992	111	373	np	41	np	4 798
December Quarter	859	337	3 037	97	373	49	np	np	4 854
2009									
March Quarter	839	409	3 236	103	371	42	np	np	5 102
MULTIPLE BEDROOM HOLIDAY FLATS, UNITS AND HOUSES (no.)									
2008									
March Quarter	8 831	2 294	10 750	859	842	193	np	np	23 933
June Quarter	8 725	2 468	10 616	874	811	185	np	np	23 843
September Quarter	8 679	2 591	10 585	847	837	np	58	np	23 891
December Quarter	8 760	2 770	10 749	826	851	195	np	np	24 320
2009									
March Quarter	8 814	2 770	10 597	829	856	187	np	np	24 222
TOTAL HOLIDAY FLATS, UNITS AND HOUSES (no.)									
2008									
March Quarter	9 645	2 701	13 885	966	1 207	241	np	np	28 898
June Quarter	9 521	2 834	13 788	983	1 170	226	np	np	28 775
September Quarter	9 479	2 974	13 577	958	1 210	np	99	np	28 689
December Quarter	9 619	3 107	13 786	923	1 224	244	np	np	29 174
2009									
March Quarter	9 653	3 179	13 833	932	1 227	229	np	np	29 324
BED SPACES (no.)									
2008									
March Quarter	51 171	15 350	57 447	6 636	6 296	1 219	np	np	139 459
June Quarter	50 038	16 631	57 268	6 333	6 097	1 120	np	np	138 524
September Quarter	49 962	16 320	56 085	6 183	6 277	np	414	np	136 990
December Quarter	49 946	16 630	56 478	6 030	6 399	1 172	np	np	137 774
2009									
March Quarter	51 438	17 863	56 746	6 037	6 444	1 073	np	np	140 707

np not available for publication but included in totals where applicable, unless otherwise indicated

(a) The number of owners, managers or real estate agents with 15 or more self-contained units.

	New South Wales	Victoria	Queensland	South Australia	Western Australia	Tasmania	Northern Territory	Australian Capital Territory	Australia
UNIT NIGHTS OCCUPIED ('000)									
2008									
March Quarter	371.3	69.0	769.2	35.0	81.0	15.3	np	np	1 360.2
June Quarter	214.4	55.0	641.6	21.6	70.0	6.5	np	np	1 028.5
September Quarter	238.3	63.9	806.6	20.4	67.8	np	8.0	np	1 222.5
December Quarter	304.4	67.3	794.5	27.9	83.7	8.0	np	np	1 305.6
2009									
March Quarter	355.5	74.6	724.3	36.1	83.7	14.8	np	np	1 305.3
UNIT OCCUPANCY RATE (%)									
2008									
March Quarter	42.4	28.1	60.9	39.8	73.8	69.6	np	np	51.8
June Quarter	24.8	21.4	51.1	24.1	65.7	31.6	np	np	39.3
September Quarter	27.4	23.4	64.6	23.1	60.9	np	88.1	np	46.3
December Quarter	34.4	24.3	62.6	32.9	74.3	35.4	np	np	48.8
2009									
March Quarter	40.9	26.8	58.2	43.1	75.8	72.0	np	np	49.6
UNIT LETTINGS ('000)									
2008									
March Quarter	74.6	14.8	263.6	12.8	27.6	6.8	np	np	404.4
June Quarter	53.3	12.7	231.6	8.6	29.0	3.5	np	np	343.4
September Quarter	52.1	13.1	254.5	8.3	24.4	np	3.0	np	359.7
December Quarter	70.7	15.9	295.0	10.9	34.0	3.6	np	np	434.4
2009									
March Quarter	72.8	15.6	259.9	13.5	28.6	7.8	np	np	401.8
AVERAGE LENGTH OF STAY (days)									
2008									
March Quarter	5.0	4.7	2.9	2.7	2.9	2.2	np	np	3.4
June Quarter	4.0	4.3	2.8	2.5	2.4	1.8	np	np	3.0
September Quarter	4.6	4.9	3.2	2.5	2.8	np	2.7	np	3.4
December Quarter	4.3	4.2	2.7	2.6	2.5	2.2	np	np	3.0
2009									
March Quarter	4.9	4.8	2.8	2.7	2.9	1.9	np	np	3.2
TAKINGS FROM ACCOMMODATION (\$'000)									
2008									
March Quarter	47 650	9 707	99 801	4 524	10 629	1 828	np	np	176 734
June Quarter	20 682	7 051	73 962	2 057	7 754	767	np	np	115 157
September Quarter	28 289	10 588	99 399	2 101	7 166	np	1 368	np	151 216
December Quarter	41 065	10 046	110 535	3 285	11 332	971	np	np	180 048
2009									
March Quarter	46 704	12 407	95 283	4 527	11 542	2 051	np	np	174 854

np not available for publication but included in totals where applicable, unless otherwise indicated

Period	New South Wales	Victoria	Queensland	South Australia	Western Australia	Tasmania	Northern Territory	Australian Capital Territory	Australia
ESTABLISHMENTS (no.)									
2008									
March Quarter	98	63	118	27	63	20	21	5	415
June Quarter	97	65	117	28	63	20	21	3	414
September Quarter	98	65	117	27	62	20	21	3	413
December Quarter	98	63	115	26	61	20	21	3	407
2009									
March Quarter	97	63	115	26	62	20	20	3	406
BED SPACES (no.)									
2008									
March Quarter	11 255	8 413	13 701	2 470	4 894	1 533	3 146	974	46 386
June Quarter	11 258	8 534	13 787	2 554	5 117	1 566	3 134	721	46 671
September Quarter	11 403	8 510	13 658	2 433	4 911	1 451	3 093	716	46 175
December Quarter	11 459	8 289	13 671	2 457	4 754	np	3 034	np	45 921
2009									
March Quarter	11 473	8 625	13 376	2 363	4 894	np	2 852	np	45 847
PERSONS EMPLOYED (no.)									
2008									
March Quarter	714	512	1 254	113	318	146	235	99	3 391
June Quarter	674	489	1 307	116	310	136	261	47	3 340
September Quarter	673	485	1 297	121	331	125	297	65	3 394
December Quarter	697	515	1 201	112	328	np	319	np	3 385
2009									
March Quarter	737	494	1 134	119	336	np	337	np	3 396
GUEST NIGHTS OCCUPIED (no.)									
2008									
March Quarter	688 429	462 481	654 058	99 887	292 160	61 916	94 244	46 551	2 399 726
June Quarter	503 706	330 817	730 086	70 964	275 758	27 878	153 736	32 881	2 125 826
September Quarter	534 841	325 008	761 036	92 151	250 235	15 707	196 392	39 538	2 214 908
December Quarter	706 921	351 940	717 311	95 546	282 286	np	137 512	np	2 373 677
2009									
March Quarter	701 611	452 833	657 520	112 463	291 336	np	102 031	np	2 426 755
BED OCCUPANCY RATE (%)									
2008									
March Quarter	67.3	60.7	53.0	44.4	65.6	44.4	33.0	57.9	57.2
June Quarter	49.2	42.7	58.2	30.7	59.2	19.6	53.9	50.1	50.1
September Quarter	50.8	41.5	60.8	41.2	55.4	11.8	69.0	60.0	52.2
December Quarter	67.5	46.9	57.0	42.3	64.5	np	50.0	np	56.5
2009									
March Quarter	68.0	59.6	54.9	52.9	66.6	np	39.8	np	59.2
GUEST ARRIVALS (no.)									
2008									
March Quarter	207 636	138 954	257 308	35 170	76 541	36 184	52 027	21 150	824 970
June Quarter	162 638	102 106	270 188	25 778	78 336	14 360	81 652	16 137	751 195
September Quarter	173 573	93 117	286 292	37 111	59 743	9 693	84 768	19 318	763 615
December Quarter	188 415	103 286	259 876	35 293	74 946	np	55 172	np	757 660
2009									
March Quarter	205 856	123 041	261 564	41 385	70 260	np	40 860	np	796 892

np not available for publication but included in totals where applicable, unless otherwise indicated

(a) Comprising establishments with 25 or more bed spaces.

<i>Period</i>	<i>New South Wales</i>	<i>Victoria</i>	<i>Queensland</i>	<i>South Australia</i>	<i>Western Australia</i>	<i>Tasmania</i>	<i>Northern Territory</i>	<i>Australian Capital Territory</i>	<i>Australia</i>
---------------	------------------------	-----------------	-------------------	------------------------	--------------------------	-----------------	---------------------------	-------------------------------------	------------------

AVERAGE LENGTH OF STAY (*days*)

2008									
March Quarter	3.3	3.3	2.5	2.8	3.8	1.7	1.8	2.2	2.9
June Quarter	3.1	3.2	2.7	2.8	3.5	1.9	1.9	2.0	2.8
September Quarter	3.1	3.5	2.7	2.5	4.2	1.6	2.3	2.0	2.9
December Quarter	3.8	3.4	2.8	2.7	3.8	np	2.5	np	3.1
2009									
March Quarter	3.4	3.7	2.5	2.7	4.1	np	2.5	np	3.0

TAKINGS FROM ACCOMMODATION (\$'000)

2008									
March Quarter	19 886	12 706	15 474	2 339	7 285	1 317	2 172	1 366	62 546
June Quarter	13 788	9 037	17 292	1 629	6 600	579	3 975	1 156	54 057
September Quarter	15 200	9 228	19 562	1 888	6 629	392	5 604	1 250	59 754
December Quarter	20 721	9 691	17 492	2 241	7 391	np	3 471	np	63 373
2009									
March Quarter	21 259	12 778	16 743	2 595	7 776	np	2 334	np	66 519

np not available for publication but included in totals where applicable, unless otherwise indicated

(a) Comprising establishments with 25 or more bed spaces.

EXPLANATORY NOTES

- INTRODUCTION**
- 1** This publication presents data from the quarterly Survey of Tourist Accommodation (STA). The STA is a mailout collection that completely enumerates all in-scope accommodation establishments within Australia.
- SCOPE**
- 2** From March quarter 2005, the scope of the STA comprises the following categories of establishments:
- licensed hotels and resorts with facilities and 5 or more rooms
 - motels, private hotels and guest houses with facilities and 5 or more rooms
 - serviced apartments with 5 or more units
 - caravan parks with 40 or more powered sites
 - holiday flats, units and houses of letting entities with 15 or more rooms or units
 - visitor hostels with 25 or more bed spaces.
- 3** With the exception of caravan parks, these establishments provide predominantly short-term non-residential accommodation, i.e. accommodation which is not leased, and which is provided to guests who would generally stay for periods of less than two months. Some of these establishments also provide long-term residential accommodation. The amount of such activity is considered to be insignificant and is included in the data presented in this publication.
- 4** Caravan parks provide either short-term or long-term accommodation. If a caravan park has the majority of sites occupied by paying guests who have stayed continuously for two months or more during the survey period, the caravan park is classified as long-term. Data for caravan parks are presented by short-term and long-term in this publication.
- 5** Previous to March quarter 2005, the scope of the STA comprised:
- licensed hotels and resorts with facilities and 15 or more rooms
 - motels, private hotels and guest houses with facilities and 15 or more rooms
 - serviced apartments with 15 or more units.
- 6** For the four quarters of 2000 and 2003, the scope of the STA was expanded to include:
- caravan parks with 40 or more powered sites
 - holiday flats, units and houses of letting entities with 15 or more rooms or units
 - visitor hostels with 25 or more bed spaces.
- COVERAGE**
- 7** The main source of coverage is from the Australian Automobile Association through AAA Tourism Pty Ltd. This is supplemented by notification of new tourism developments and their likely opening dates in selected guides, major tourism journals and periodicals and newspapers. Periodic comparison with lists of accommodation establishments provided by the various tourism organisations and industry associations is also undertaken.
- TAKINGS FROM ACCOMMODATION**
- 8** From 1 July 2000, takings from accommodation include gross revenue from the provision of accommodation, including GST. Takings from meals are excluded. Where businesses are unable to provide the data inclusive of GST, it is automatically adjusted by the ABS prior to aggregation and release in output.
- STAR GRADING**
- 9** Star grade classifications of establishments are continuously revised by AAA Tourism Pty Ltd. This should be taken into account when making comparisons over time. Any queries regarding the star grading process should be directed to AAA Tourism Pty Ltd on (03) 8601 2200 or email <enquiries@aaatourism.com.au>.
- 10** Data by star grade for states and territories are included in the data cubes that accompany this publication: Tourist Accommodation, Small Area Data (cat. no. 8635.0.55.002 for national data and cat. no. 8635.1.55.001 – 8635.8.55.001 for state/territory data).

EXPLANATORY NOTES *continued*

STATISTICAL GEOGRAPHY

11 Small area statistics for 2009 are classified to the Australian Standard Geographical Classification (ASGC), 2008 Edition (cat. no. 1216.0). Data are coded to the statistical local area (SLA) level.

12 These SLA data are aggregated to tourism regions as defined by relevant state and territory tourism organisations. Tourism regions are reviewed annually and are subject to boundary and name changes. Where changes have occurred care should be taken when making comparisons with previously published data at this level.

13 Data by tourism regions are no longer presented in this publication. Small area data are provided in the data cubes that accompany this publication: Tourist Accommodation, Small Area Data (cat. no. 8635.0.55.002 for national data and cat. no. 8635.1.55.001 – 8635.8.55.001 for state/territory data).

14 Details of SLAs, the composition of tourism regions and maps of tourism regions are provided in the ABS publication *Tourism Region Maps and Concordance Files, Australia* (cat. no. 9503.0.55.001) available from the ABS web site <www.abs.gov.au>.

DATA QUALITY

15 The survey does not have a sample component and the data are not subject to sampling variability. However, other inaccuracies collectively referred to as non-sampling error may affect the data. These non-sampling errors may arise from a number of sources, including:

- errors in the reporting of data by providers
- errors in the process of capturing data
- imputation for missing data
- definition and classification errors
- incomplete coverage.

16 Every effort has been made to reduce non-sampling error to a minimum by careful design and testing of questionnaires, and efficient operating procedures and systems used to compile statistics.

EXPLANATORY NOTES *continued*

Response rates

17 The response rates for Australia for the most recent quarters are shown below:

RESPONSE RATES

	<i>Mar</i> <i>Qtr</i> 2008	<i>Jun</i> <i>Qtr</i> 2008	<i>Sep</i> <i>Qtr</i> 2008	<i>Dec</i> <i>Qtr</i> 2008	<i>Mar</i> <i>Qtr</i> 2009
<i>Activity</i>	%	%	%	%	%
Licensed hotels with facilities					
with 5 to 14 rooms	84.6	79.6	82.3	74.9	82.1
with 15 or more rooms	90.8	88.2	90.2	88.4	90.3
with 5 or more rooms	88.6	85.2	87.5	83.8	87.5
Motels and guest houses					
with 5 to 14 rooms	89.3	85.6	88.2	83.5	89.0
with 15 or more rooms	90.7	89.1	88.6	89.8	90.1
with 5 or more rooms	90.3	88.0	88.5	87.8	89.7
Serviced apartments					
with 5 to 14 rooms	89.1	87.5	89.8	86.9	89.0
with 15 or more rooms	93.7	92.1	91.3	92.5	93.8
with 5 or more rooms	92.5	90.8	90.9	91.0	93.3
Hotels, motels and serviced apartments					
with 5 to 14 rooms	88.2	84.6	87.1	82.1	87.9
with 15 or more rooms	91.4	89.6	89.5	90.1	90.9
with 5 or more rooms	90.4	88.0	88.8	87.7	90.0
Caravan parks	92.5	89.4	89.4	88.8	92.2
Holiday flats, units and houses	92.5	87.6	85.7	87.3	91.4
Visitor hostels	91.1	86.7	85.7	89.9	92.1

Imputation rates

18 Missing data items are replaced by imputed values based on reported data. Average quarterly movements are applied to previously reported data for each non-responding unit to estimate values for missing data items. Only if previously reported data are not available, then data from a similar unit is used as a 'donor' for the missing data items.

EXPLANATORY NOTES *continued*

Imputation rates continued

19 The imputation rates for Australia for the most recent quarters are shown below:

IMPUTATION RATES, NIGHTS OCCUPIED (a)

<i>Activity</i>	<i>Mar</i> <i>Qtr</i> <i>2008</i>	<i>Jun</i> <i>Qtr</i> <i>2008</i>	<i>Sep</i> <i>Qtr</i> <i>2008</i>	<i>Dec</i> <i>Qtr</i> <i>2008</i>	<i>Mar</i> <i>Qtr</i> <i>2009</i>
	%	%	%	%	%
Licensed hotels with facilities					
with 5 to 14 rooms	14.1	19.1	17.2	24.4	14.3
with 15 or more rooms	2.9	4.4	2.6	4.0	2.2
with 5 or more rooms	3.2	4.8	3.0	4.6	2.6
Motels and guest houses					
with 5 to 14 rooms	9.9	13.5	9.3	15.8	7.8
with 15 or more rooms	7.3	9.6	9.2	8.3	7.6
with 5 or more rooms	7.5	9.9	9.3	8.9	7.7
Serviced apartments					
with 5 to 14 rooms	8.9	10.2	9.2	10.6	5.5
with 15 or more rooms	4.0	6.0	5.9	6.1	4.0
with 5 or more rooms	4.2	6.2	6.0	6.3	4.0
Hotels, motels and serviced apartments					
with 5 to 14 rooms	10.5	14.0	10.8	16.4	8.6
with 15 or more rooms	4.7	6.7	5.8	6.0	4.5
with 5 or more rooms	5.0	7.1	6.1	6.6	4.8
Caravan parks	7.0	9.0	8.4	9.0	5.7
Holiday flats, units and houses	6.8	9.8	9.2	11.1	6.2
Visitor hostels	8.5	14.7	15.5	9.3	5.4

(a) Based on room nights for hotels, motels and serviced apartments; site nights for caravan parks; unit nights for holiday flats, units and houses; and guest nights for visitor hostels

IMPUTATION RATES, TAKINGS FROM ACCOMMODATION

<i>Activity</i>	<i>Mar</i> <i>Qtr</i> <i>2008</i>	<i>Jun</i> <i>Qtr</i> <i>2008</i>	<i>Sep</i> <i>Qtr</i> <i>2008</i>	<i>Dec</i> <i>Qtr</i> <i>2008</i>	<i>Mar</i> <i>Qtr</i> <i>2009</i>
	%	%	%	%	%
Licensed hotels with facilities					
with 5 to 14 rooms	14.1	19.7	17.1	24.0	13.9
with 15 or more rooms	2.1	3.8	1.9	3.2	1.6
with 5 or more rooms	2.2	4.0	2.1	3.4	1.7
Motels and guest houses					
with 5 to 14 rooms	10.6	13.6	9.8	17.4	7.9
with 15 or more rooms	7.0	8.8	8.8	8.0	7.1
with 5 or more rooms	7.3	9.2	8.9	8.8	7.1
Serviced apartments					
with 5 to 14 rooms	8.7	10.2	10.1	10.7	5.4
with 15 or more rooms	3.4	6.0	5.1	6.4	3.7
with 5 or more rooms	3.6	6.2	5.3	6.6	3.7
Hotels, motels and serviced apartments					
with 5 to 14 rooms	10.6	13.7	10.9	16.6	8.1
with 15 or more rooms	3.7	5.7	4.6	5.3	3.6
with 5 or more rooms	3.9	6.0	4.9	5.7	3.7
Caravan parks	5.9	9.3	8.2	7.9	5.4
Holiday flats, units and houses	7.5	8.7	8.5	10.8	5.3
Visitor hostels	8.7	13.7	14.7	7.9	4.5

SEASONAL ADJUSTMENT

20 Seasonal adjustment is a means of removing the estimated effects of normal seasonal variation from the original time series so that the effect of other influences on the series may be more clearly recognised. Seasonal adjustment procedures do not aim to remove the irregular or non-seasonal influences which may be present in any

EXPLANATORY NOTES *continued*

SEASONAL ADJUSTMENT

continued

particular quarter. Irregular influences that are highly volatile can make it difficult to interpret the movement of the series even after adjustment for seasonal variation, and cannot be assumed to indicate changes in the trend.

21 The seasonally adjusted estimates in this publication have been produced using a concurrent methodology whereby the seasonal factors are revised each month to take into account the seasonality exhibited by the latest observation. A more detailed review is conducted annually.

22 From the March quarter 2008, the Survey of Tourist Accommodation collection implemented Autoregressive Integrated Moving Average (ARIMA) modelling techniques for the majority of applicable time series. The revision properties of the seasonally adjusted and trend estimates can be improved by the use of ARIMA modelling. ARIMA modelling relies on the characteristics of the series being analysed to project future period data. The projected values are temporary, intermediate values, that are only used internally to improve the estimation of the seasonal factors. The projected data do not affect the original estimates and are discarded at the end of the seasonal adjustment process.

23 For more information on the details of ARIMA modelling see the feature article 'Use of ARIMA modelling to reduce revisions' in the October 2004 issue of Australian Economic Indicators (cat. no. 1350.0). Any queries regarding the ARIMA modelling should be directed to Time Series Analysis on (02) 6252 6345 or email <time.series.analysis@abs.gov.au>.

TREND ESTIMATES

24 Smoothing the seasonally adjusted series reduces the impact of the irregular component of the seasonally adjusted series and creates the trend estimates. The trend estimates are derived by applying a 7-term Henderson moving average to the quarterly seasonally adjusted series. The Henderson moving average used in the middle of the time series is symmetric but, as the end of a time series is approached, asymmetric forms of the symmetric moving average are applied. Unlike the weights of the standard 7-term Henderson moving average, the weights used with the quarterly data have been tailored to suit the particular characteristics of individual series.

25 While these techniques enable trend estimates for the latest period to be produced, the process does result in revisions to the trend estimates in recent quarters, particularly as additional original estimates become available. For further information refer to Information Paper: A Guide to Interpreting Time Series - Monitoring Trends, 2003 (cat. no. 1349.0) available at the ABS web site <www.abs.gov.au>.

CONFIDENTIALISATION OF DATA

26 Under the Census and Statistics Act, when releasing statistics the ABS is required to do this in a manner that is "not likely" (in a legal sense) to enable the identification of a particular person or organisation. A number of techniques are used to do this, including suppression of information. To ensure provider confidentiality in the Survey of Tourist Accommodation, the ABS uses a computerised process known as Disclosure Avoidance Analysis System (DAAS) to confidentialise the entire tourist accommodation dataset each quarter. This process not only ensures that data are suppressed to ensure individual establishments cannot be identified, but also suppresses data in other (consequential) cells to ensure data cannot be derived through deduction from the information available.

27 While the scope and coverage of the Survey of Tourist Accommodation has been expanded, priority has been given to maintaining the integrity and continuity of the core collection (hotels, motels and guest houses, and serviced apartments with 15 or more rooms). In order to maximise data released from the core collection series and the new components of the expanded scope collection (hotels, motels and guest houses, and serviced apartments with 5-14 rooms), the 'total' series (5 or more rooms) has been used for any consequential confidentiality required where possible.

EXPLANATORY NOTES *continued*

CONFIDENTIALISATION OF DATA *continued*

28 The DAAS process begins by confidentialising at the Statistical Local Area (SLA) level, then across Tourism regions, then at the state level and finally the national level. If there is an SLA that has been made confidential then another SLA will have to be made confidential within that Tourism region to protect the confidentiality of the providers in the SLA that was originally made confidential. Depending on the number of SLAs in the Tourism region the whole Tourism region may need to be made confidential. As a consequence of this, at least one more Tourism region within a state or territory will also be confidentialised. This may also occur at the state/territory level.

USER AGGREGATION OF DATA

29 The aggregation of data by users across time periods should be undertaken with caution, due to the possibility of non-inclusion of confidentialised data (see the above section for more information about confidentialisation). Where one or more cells contributing to a total have been confidentialised (ie, contains the value of n.p.), the resulting aggregated total will be incorrect. However, some broader levels of data may not be affected by confidentialised cells.

30 Where data can be aggregated (ie, no confidentialised cells are included) for calendar and financial year/s purposes, the data items Establishments, Rooms, Persons employed and Bed spaces should not be aggregated. For these items it is recommended that for calendar years, the value of the December quarter is used, and for financial years, the value of the June quarter is used.

31 Any data items that have been derived from other items collected in the survey cannot be aggregated (ie, all those with labels ending in 'rate' or commencing with 'average'). These items must be re-derived based on the aggregation of each of the quarterly items collected in the survey used in the derivation of the rate or average (see Glossary for formulas).

32 Users are cautioned against deriving any non-standard aggregations (eg, aggregation of selected star gradings such as 4-star and 5-star; aggregation of selected geographical areas such as capital city areas and balance of state; aggregation of selected activities such as hotels and motels combined). This is because data are confidentialised based on the standard data item structure.

EFFECTS OF ROUNDING

33 Where figures have been rounded, discrepancies may occur between totals and the sum of the component items.

RELATED PUBLICATIONS

34 Other ABS publications and products which may be of interest are outlined below. All publications released from 1998 onwards are available on the ABS web site <www.abs.gov.au>.

Tourist Accommodation, Small Area Data (cat. no. 8635.0.55.002) (data cube for Australia – issued quarterly)

Tourist Accommodation, Small Area Data (cat. no. 8635.1.55.001–8635.8.55.001) (data cubes for each state/territory – issued quarterly)

Tourism Region Maps and Concordance Files, Australia (cat. no. 9503.0.55.001) (annual)

Tourist Accommodation, Australia, Expanded Scope Collection (cat. no. 8635.0.55.001) (irregular)

Short-term Visitor Arrivals Estimates, Australia (cat. no. 3401.0.55.001) (issued monthly)

Overseas Arrivals and Departures, Australia (cat. no. 3401.0) (issued monthly)

Australian National Accounts, Tourism Satellite Account (cat. no. 5249.0) (annual)

35 The catalogue of current publications and other products is available from the ABS web site <www.abs.gov.au>. The ABS also issues release advices on the web site which detail products to be released both in the coming week and the next six months.

EXPLANATORY NOTES *continued*

ABS DATA AVAILABLE ON
REQUEST

36 As well as the statistics included in this publication, the ABS has other relevant data available on request. Inquiries should be made to the National Information and Referral Service on 1300 135 070.

GLOSSARY

Average length of stay	<p>Average number of days each guest stayed during the reference period. It is a derived item calculated by dividing the number of guest nights occupied by the number of guest arrivals with the result expressed as a number of days,</p> $\text{Average length of stay(days)} = \frac{\text{Guest nights occupied}}{\text{Guest arrivals}}$
Average takings per available room night	<p>The takings from accommodation divided by the total number of room nights available for the survey period,</p> $\text{Average takings per available room night(\$)} = \frac{\text{Takings from accommodation}}{\text{Room nights available}}$
Average takings per room night occupied	<p>The takings from accommodation divided by the total number of room nights occupied for the survey period,</p> $\text{Average takings per room night occupied(\$)} = \frac{\text{Takings from accommodation}}{\text{Room nights occupied}}$
Bed occupancy rate	<p>The bed occupancy rate represents bed occupancy expressed as a percentage of total capacity available during the survey period,</p> $\text{Bed occupancy rate (\%)} = \frac{\text{Guest nights occupied}}{\text{Guest nights available}} * 100$
Bed spaces	<p>The maximum number of bed spaces normally in place available to accommodate paying guests during the survey period. Three-quarter beds are counted as one bed space; double beds as two bed spaces. Cots and divans not normally used as beds are excluded.</p>
Cabins, flats, units and villas	<p>The maximum number of cabins, flats, units and villas available at caravan parks for accommodating paying guests during the survey period.</p>
Capacity	<p>Capacity in terms of rooms/units/apartments/suites, visitor hostel bed spaces, holiday flats/units/houses or caravan park sites is the maximum number available to accommodate paying guests on the last day of the survey period. Capacity closed temporarily for seasonal reasons is included.</p>
Caravan park sites	<p>The measure of total caravan park capacity available for accommodating paying guests during the survey period. Includes on-site vans, other powered sites, unpowered sites and cabins, flats, units and villas.</p>
Caravan parks	<p>Establishments with 40 or more powered sites and cabins, flats, units and villas which provide either short-term or long-term accommodation to the general public and which provide powered sites for caravans and toilet, shower and laundry facilities for guests.</p>
Caravan parks, long-term	<p>Caravan parks where the majority of paying guests occupied sites for periods of two months or more.</p>
Caravan parks, short-term	<p>Caravan parks where the majority of paying guests occupied sites for periods of less than two months.</p>
Establishments	<p>The number of licensed hotels and resorts, motels and guest houses, serviced apartments, caravan parks and visitor hostels within the scope of the survey which operated for any part of the survey period, or which closed temporarily for the quarter for seasonal reasons.</p>
Guest arrivals	<p>The total number of paying guests counted only on the first night they stayed at the accommodation establishment during the survey period.</p> <p>For holiday flats, units and houses this is the same as unit lettings.</p> <p>This data item is not collected for caravan parks.</p>
Guest nights available	<p>The total number of nights available to all paying guests during the survey period.</p> <p>This is derived from the number of bed spaces multiplied by the number of days for which they were available during the survey period. For establishments closing (other than for seasonal reasons) or opening during this period, operating periods only are included.</p>

GLOSSARY *continued*

Guest nights occupied	The total number of paying guests counted on each night they stayed at the accommodation establishment during the survey period.
Holiday flats, units and houses	The total number of holiday flats, units and houses (excluding establishments predominantly operated on a time-share basis) operated by letting entities (i.e. owners, managers or real estate agents) who have sole letting rights to at least 15 flats, units or houses for short-term letting. These flats, units or houses should be mainly self-contained in terms of cooking, bath (or shower) and toilet facilities and should not have breakfast available for guests. Data for holiday flats, units or houses include short-term owner operators as well as paying guest accommodation.
Hotels	See licensed hotels and resorts with facilities.
Letting entities	For holiday flats, units and houses, the number of owners, managers or real estate agents within the scope of the survey who operated for any part of the survey period.
Licensed hotels and resorts with facilities	Establishments with five or more rooms which are licensed to operate a public bar and which provide accommodation on a room/suite basis, with a bath/shower and toilet in most guest rooms, but which do not have full cooking facilities (i.e. hot plates and oven/microwave) in most guest rooms.
Motels, private hotels and guest houses with facilities	Establishments with five or more rooms which are not licensed to operate a public bar, and which provide accommodation on a room/suite basis, with a bath/shower and toilet in most guest rooms, but which do not have full cooking facilities (i.e. hot plates and oven/microwave) in most guest rooms.
Multiple bedroom holiday flats, units and houses	The total number of holiday flats, units and houses available with multiple bedrooms.
Occupancy	Occupancy in terms of room nights, unit nights or site nights occupied refers to the total number of nights each room, unit or caravan park was occupied during the survey period. Occupancy in terms of guest nights refers to the total number of paying guests counted on each night they stayed at the accommodation establishment during the survey period.
On-site vans	The maximum number of vans owned or leased by the establishment for the purpose of providing accommodation to the general public.
Other powered sites	The maximum number of sites with provision for connection to electric power supply, available at caravan parks for accommodating paying guests during the survey period, excluding powered sites occupied by on-site vans, and cabins, flats, units and villas.
Other sites permanently reserved	The total number of powered and unpowered sites, on-site vans and cabins, flats, units and villas continuously let for two months or more on the last day of the survey period to tenants who occupy the sites only on a casual or sporadic basis.
Persons employed	The total number of persons working at each accommodation establishment at the end of the survey period (including working proprietors and those working on other than accommodation activities). This data item is not applicable to holiday flats, units and houses let by real estate agents.
Room nights available	The number of rooms/units available multiplied by the number of days for which they were available during the survey period. For establishments closing (other than for seasonal reasons) or opening during this period, operating periods only are included.
Room nights occupied	The number of nights each guest room/unit was occupied by a paying guest during the survey period.
Room occupancy rate	The room occupancy rate represents room occupancy expressed as a percentage of total capacity available during the survey period, $\text{Room occupancy rate (\%)} = \frac{\text{Room nights occupied}}{\text{Room nights available}} * 100$

GLOSSARY *continued*

Room occupancy rate <i>continued</i>	providing that, for establishments closing (other than for seasonal reasons) or opening during the survey period, the denominator of the above expression includes only operating periods.
Rooms	The maximum number of rooms available for accommodating short-term paying guests at each licensed hotel and resort, motel and guest house and serviced apartment during the survey period. Units, apartments and suites are treated as rooms for these types of establishments in these survey results.
Serviced apartments	Establishments with five or more units which mostly comprise self-contained units at the same location, and which are available on a unit/apartment basis to the general public for a minimum of one night. The units should have full cooking facilities (i.e. hot plates and oven/microwave), refrigerator and bath/shower and toilet facilities; all bed linen and towels should be provided, and daily servicing (i.e. cleaning and bed making) must be available through the on-site management, although this service may not necessarily be used.
Single bedroom holiday flats, units and houses	The total number of holiday flats, units and houses available with a single bedroom.
Site nights available	The number of caravan park sites available multiplied by the number of days for which they were available during the survey period. For establishments closing (other than for seasonal reasons) or opening during this period, operating periods only are included.
Site nights occupied	The total number of nights each caravan park site was occupied during the survey period.
Site occupancy rate	<p>The site occupancy rate for caravan parks represents site occupancy expressed as a percentage of total capacity available during the survey period,</p> $\text{Site occupancy rate (\%)} = \frac{\text{Site nights occupied}}{\text{Site nights available}} * 100$ <p>providing that, for establishments closing (other than for seasonal reasons) or opening during the survey period, the denominator of the above expression includes only operating periods.</p>
Sites occupied by long-term guests	The total number of caravan park sites occupied on the last day at the end of the survey period by guests who have stayed continuously for two months or more.
Star grading	<p>The grading of hotels, motels and guest houses with facilities and serviced apartments is based on the classification system owned by AAA Tourism Pty Ltd. The gradings are allocated according to a points system based on the amenities and facilities available to guests. Details of the grading scheme are contained in the publication <i>Accommodation Guide</i> published by AAA Tourism Pty Ltd for each of the individual Australian Motoring Organisations. For the purpose of classifying establishments to a star grading in this publication, 'half' star gradings are ignored (e.g. a two and a half star grading has been shown as two star).</p> <p>While coverage has significantly improved, some establishments (including some competing in the four and five star markets and having significant takings) still remain outside the star grading scheme. These establishments have been given a star grading of 'ungraded'.</p>
Takings from accommodation	<p>Since 1 July 2000, takings from accommodation include gross revenue from the provision of accommodation, including GST. Takings from meals are excluded. In cases where takings from accommodation data cannot be provided inclusive of GST the amount of GST payable is estimated and the data revised accordingly.</p> <p>Takings from accommodation for each month generally represent the takings received during that month. Where payments are received in advance of, or after the provision of accommodation to guests, the monthly figure for takings from accommodation may not necessarily bear a direct relationship to the number of guests accommodated during the month.</p>

GLOSSARY *continued*

Unit lettings	The total number of times a holiday flat, unit or house was occupied by a new tenant, counted only on the first night it was occupied by the new tenant. This is the equivalent of guest arrivals.
Unit nights available	The number of holiday flats, units and houses available multiplied by the number of days for which they were available during the survey period. For establishments closing (other than for seasonal reasons) or opening during this period, operating periods only are included.
Unit nights occupied	The total number of nights each holiday flat, unit or house was occupied during the survey period.
Unit occupancy rate	<p>The unit occupancy rate for holiday flats, units and houses represents unit occupancy expressed as a percentage of total capacity available during the survey period,</p> $\text{Unit occupancy rate (\%)} = \frac{\text{Unit nights occupied}}{\text{Unit nights available}} * 100$ <p>providing that, for letting entities closing (other than for seasonal reasons) or opening during the survey period, the denominator of the above expression includes only operating periods.</p>
Unpowered sites	The maximum number of sites with no provision for connection to electric power supply, available at caravan parks for accommodating paying guests during the survey period.
Visitor hostels	Establishments with 25 or more bed spaces which provide accommodation to visitors on a bed basis (rather than by room). This category does not include establishments providing charity type accommodation (e.g. Salvation Army hostels) nor hotels, motels and guest houses without in-room facilities which provide accommodation on a per room basis.

FOR MORE INFORMATION . . .

INTERNET **www.abs.gov.au** the ABS website is the best place for data from our publications and information about the ABS.

INFORMATION AND REFERRAL SERVICE

Our consultants can help you access the full range of information published by the ABS that is available free of charge from our website. Information tailored to your needs can also be requested as a 'user pays' service. Specialists are on hand to help you with analytical or methodological advice.

PHONE 1300 135 070

EMAIL client.services@abs.gov.au

FAX 1300 135 211

POST Client Services, ABS, GPO Box 796, Sydney NSW 2001

FREE ACCESS TO STATISTICS

All statistics on the ABS website can be downloaded free of charge.

WEB ADDRESS www.abs.gov.au